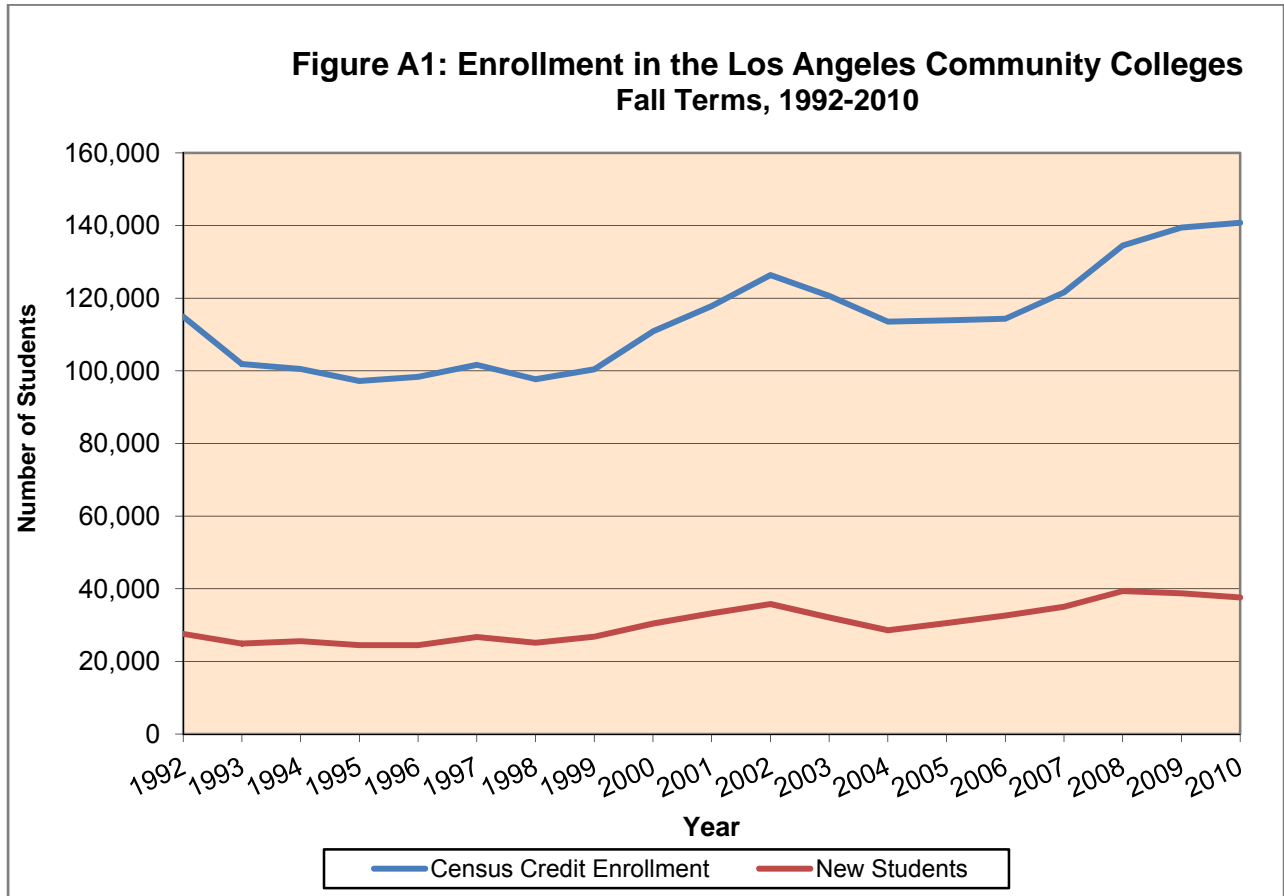


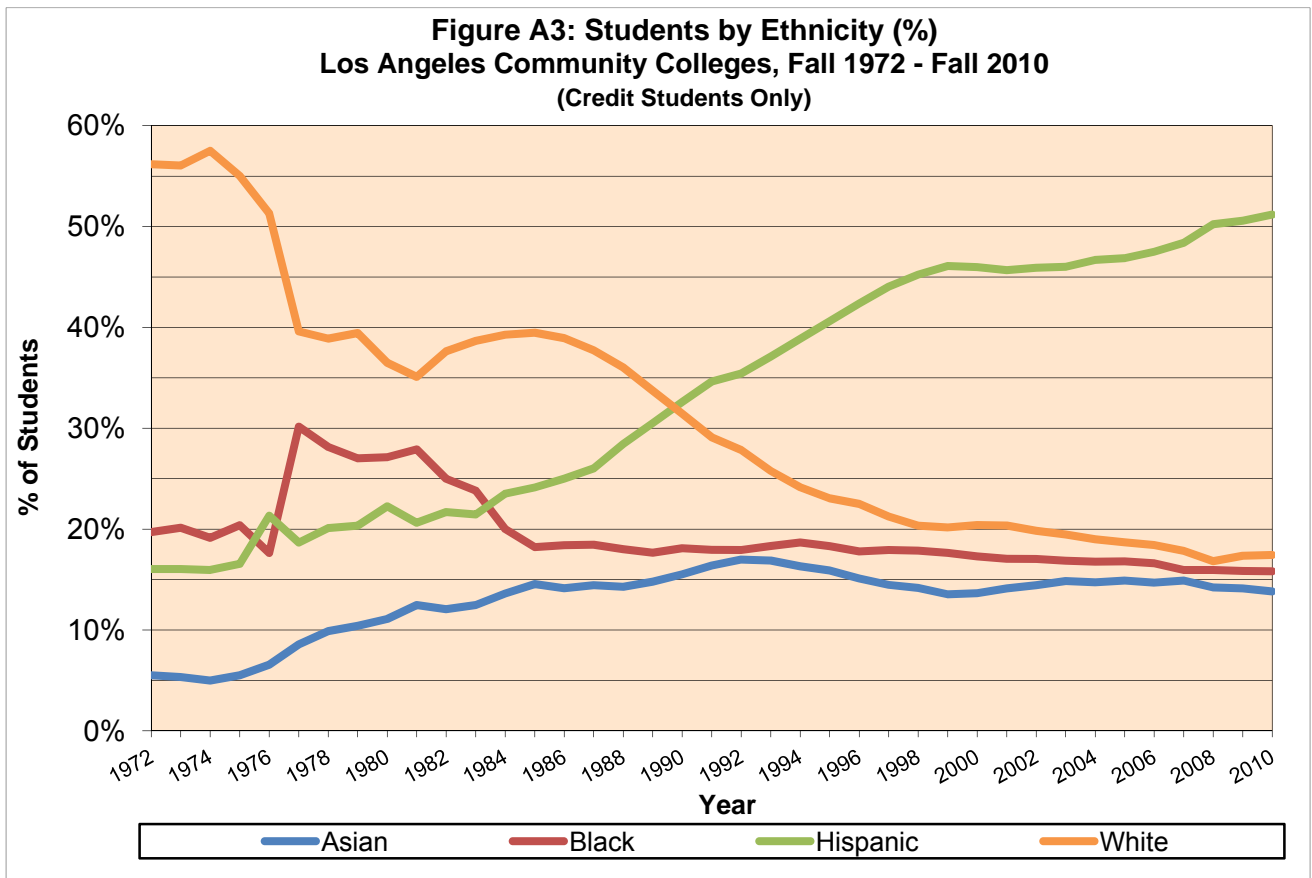
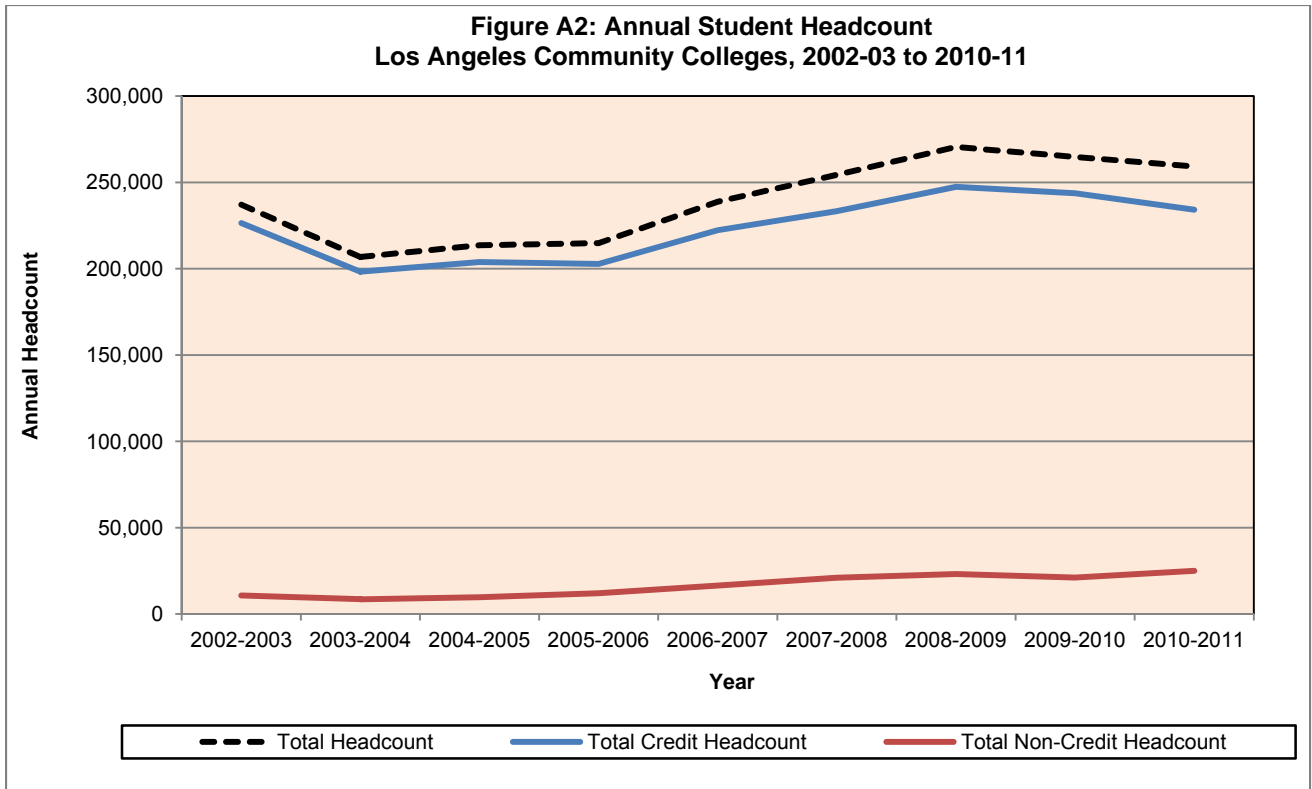
**Los Angeles Community College District
Internal Scan for LACCD Strategic Plan, 2012-2017**

A. Enrollment Trends and Student Characteristics

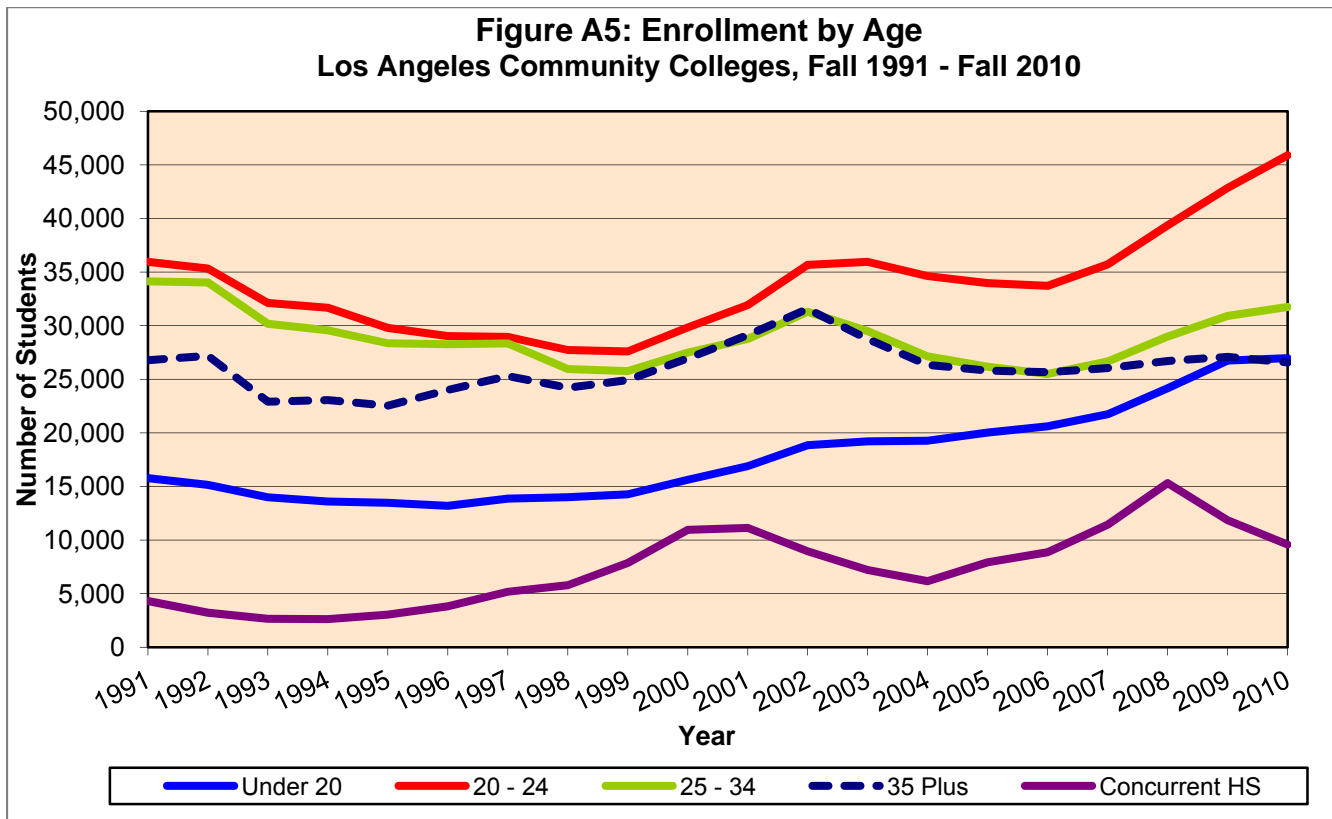
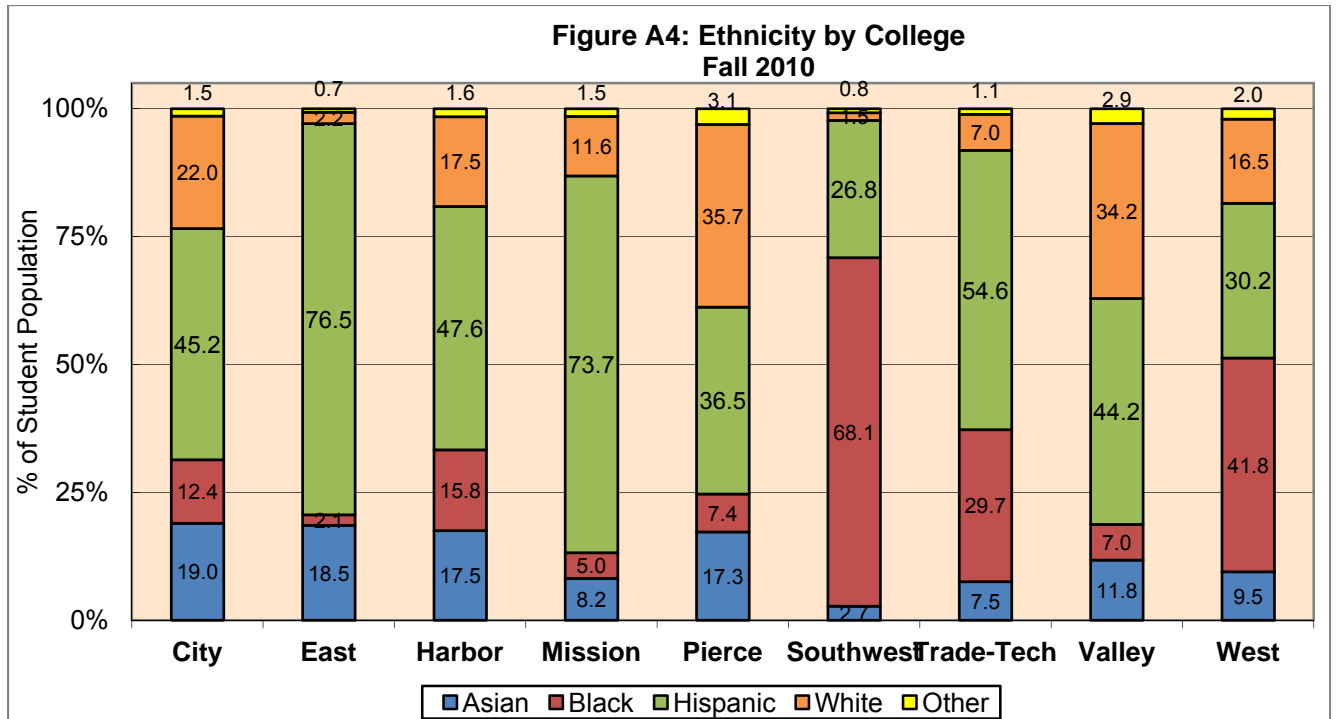


Notes:
 Enrollments are Unduplicated
 Census Credit Enrollment counts all students enrolled in at least one credit class at the time of the Fall census.
 New Students includes all first-time students and transfers not previously enrolled in the college (concurrent high school students have not been counted in the new student category).

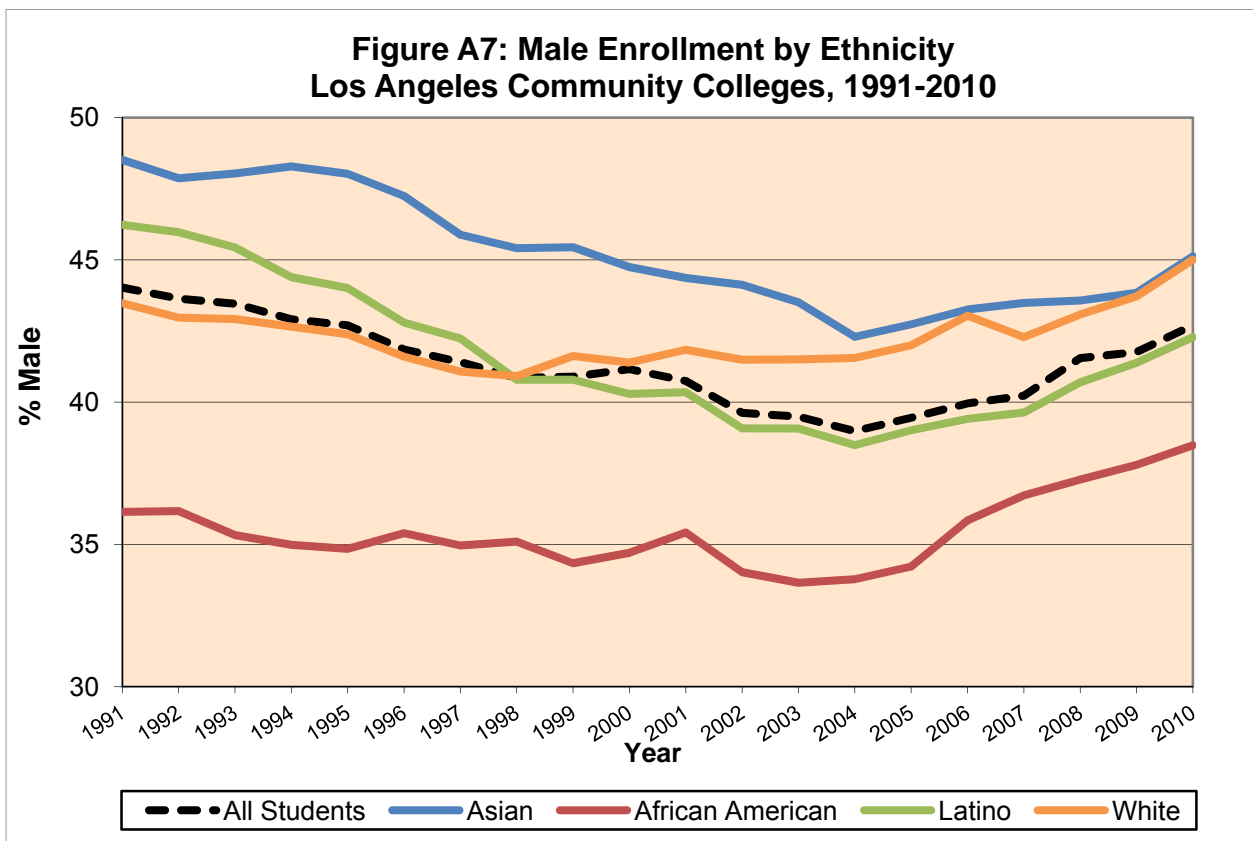
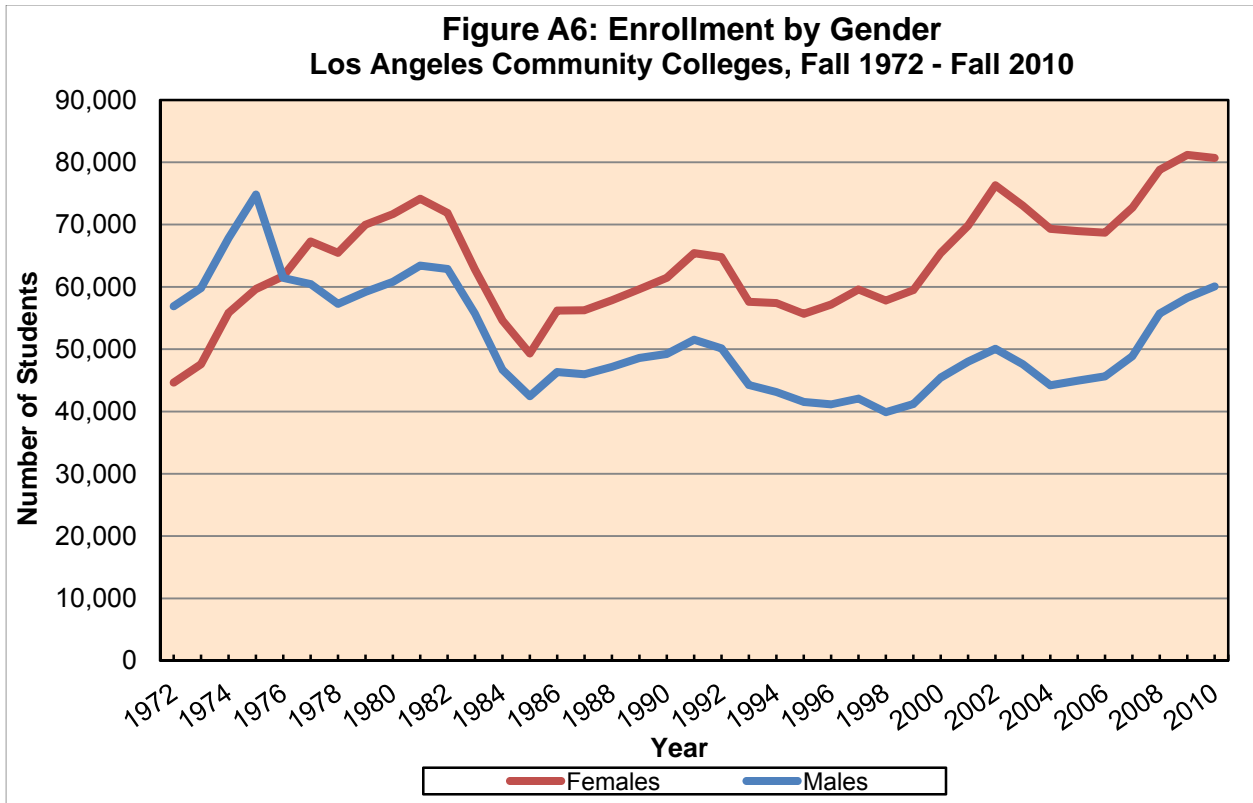
**Los Angeles Community College District
Internal Scan for LACCD Strategic Plan, 2012-2017**



**Los Angeles Community College District
Internal Scan for LACCD Strategic Plan, 2012-2017**



**Los Angeles Community College District
Internal Scan for LACCD Strategic Plan, 2012-2017**



**Los Angeles Community College District
Internal Scan for LACCD Strategic Plan, 2012-2017**

B. Student Preparation

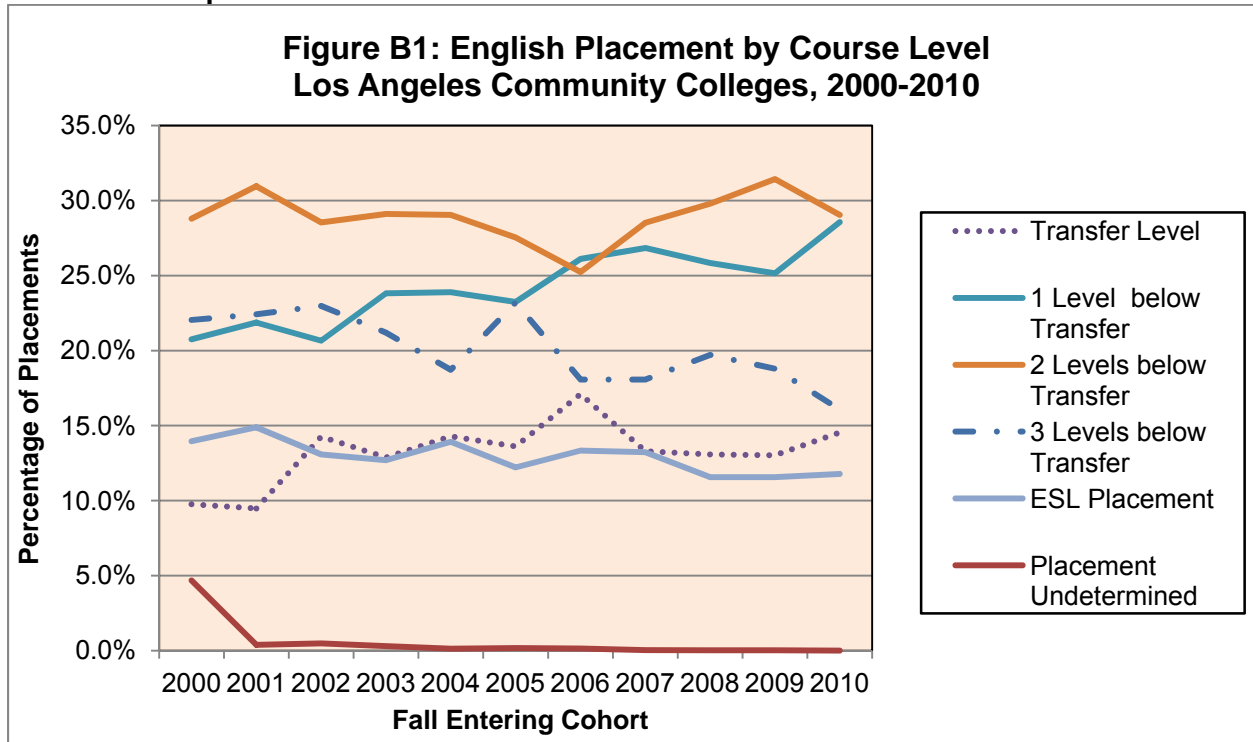


Figure B2: Assessment Levels in English 2000-2010

Fall Entering Cohort	Transfer Level	1 Level below Transfer	2 Levels below Transfer	3 Levels below Transfer	ESL Placement	Placement Undetermined	Total Assessed
2000	9.8%	20.8%	28.8%	22.0%	14.0%	4.7%	100.0%
2001	9.5%	21.9%	31.0%	22.4%	14.9%	0.4%	100.0%
2002	14.3%	20.7%	28.5%	23.0%	13.1%	0.5%	100.0%
2003	12.9%	23.8%	29.1%	21.2%	12.7%	0.3%	100.0%
2004	14.3%	23.9%	29.0%	18.7%	13.9%	0.1%	100.0%
2005	13.6%	23.2%	27.5%	23.2%	12.2%	0.2%	100.0%
2006	17.1%	26.1%	25.2%	18.1%	13.3%	0.1%	100.0%
2007	13.3%	26.8%	28.5%	18.1%	13.2%	0.0%	100.0%
2008	13.1%	25.8%	29.8%	19.7%	11.6%	0.0%	100.0%
2009	13.0%	25.1%	31.4%	18.8%	11.6%	0.0%	100.0%
2010	14.5%	28.6%	29.0%	16.1%	11.8%	0.0%	100.0%
All	13.3%	24.2%	28.9%	20.2%	12.9%	0.5%	100.0%
Asian	14.0%	20.2%	19.8%	13.9%	31.7%	0.5%	100.0%
Black	9.9%	22.8%	35.9%	30.2%	1.1%	0.1%	100.0%
Hispanic	10.1%	24.4%	31.6%	22.9%	10.2%	0.7%	100.0%
White	25.4%	28.4%	21.0%	7.2%	17.7%	0.2%	100.0%
Female	12.3%	23.6%	28.7%	20.3%	14.6%	0.5%	100.0%
Male	14.5%	25.1%	29.2%	20.1%	10.7%	0.5%	100.0%

**Los Angeles Community College District
Internal Scan for LACCD Strategic Plan, 2012-2017**

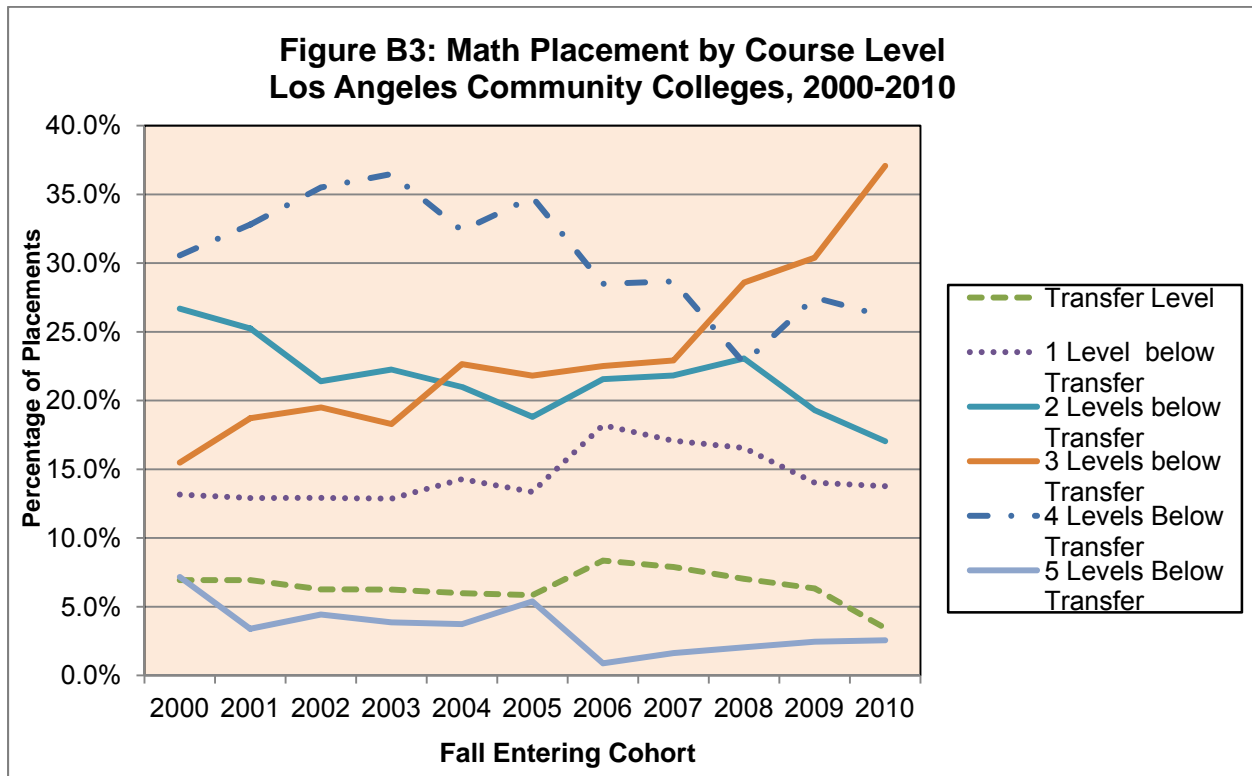
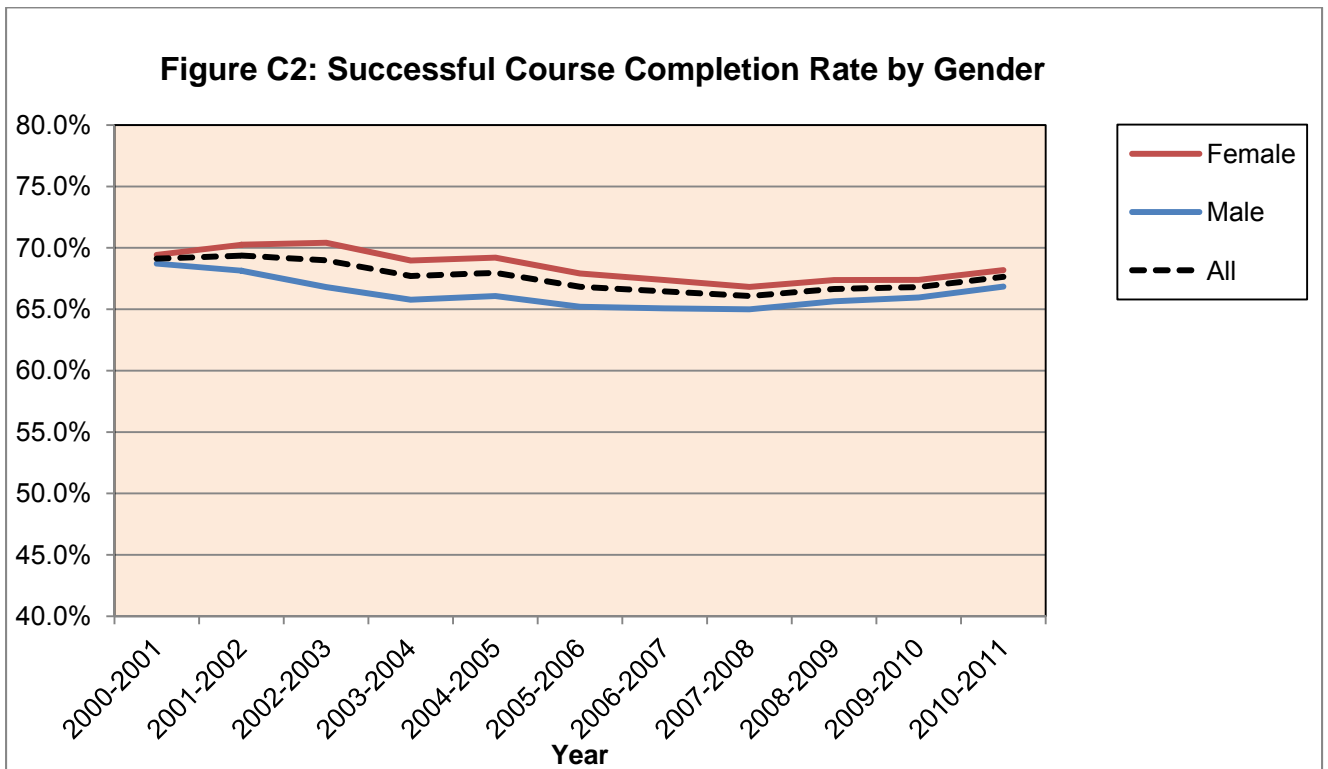
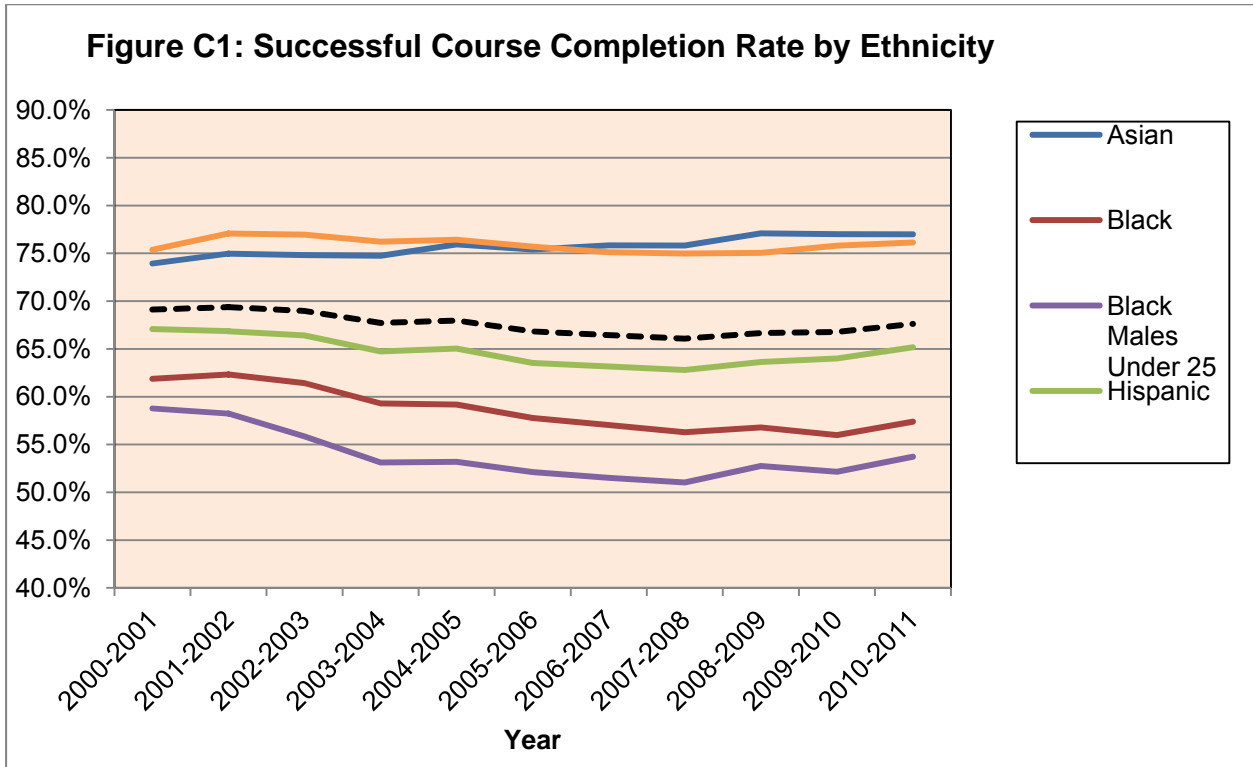


Figure B4: Assessment Levels in Math 2000-2010

Fall Entering Cohort	Transfer Level	1 Level below Transfer	2 Levels below Transfer	3 Levels below Transfer	4 Levels Below Transfer	5 Levels Below Transfer	Total Assessed
2000	6.9%	13.2%	26.7%	15.5%	30.6%	7.2%	100.0%
2001	6.9%	12.9%	25.2%	18.7%	32.8%	3.4%	100.0%
2002	6.3%	12.9%	21.4%	19.5%	35.5%	4.4%	100.0%
2003	6.2%	12.9%	22.3%	18.3%	36.5%	3.9%	100.0%
2004	6.0%	14.3%	21.0%	22.7%	32.4%	3.7%	100.0%
2005	5.8%	13.4%	18.8%	21.8%	34.8%	5.4%	100.0%
2006	8.4%	18.2%	21.6%	22.5%	28.5%	0.9%	100.0%
2007	7.9%	17.1%	21.8%	22.9%	28.7%	1.6%	100.0%
2008	7.0%	16.6%	23.1%	28.6%	22.7%	2.1%	100.0%
2009	6.3%	14.0%	19.3%	30.4%	27.5%	2.5%	100.0%
2010	3.4%	13.8%	17.0%	37.1%	26.1%	2.6%	100.0%
All	6.5%	14.5%	21.5%	23.6%	30.6%	3.4%	100.0%
Asian	21.1%	27.4%	21.8%	15.8%	13.1%	0.8%	100.0%
Black	1.3%	6.6%	19.1%	23.0%	41.5%	8.4%	100.0%
Hispanic	2.4%	11.2%	21.3%	26.2%	35.8%	3.1%	100.0%
White	13.5%	23.7%	24.6%	22.2%	15.4%	0.6%	100.0%
Female	5.4%	13.2%	20.5%	24.0%	33.3%	3.6%	100.0%
Male	7.7%	16.1%	22.6%	23.2%	27.2%	3.2%	100.0%

**Los Angeles Community College District
Internal Scan for LACCD Strategic Plan, 2012-2017**

C. Student Success



**Los Angeles Community College District
Internal Scan for LACCD Strategic Plan, 2012-2017**

Figure C3: Basic Skills English - Successful Course Completion

Academic Year	City	East	Harbor	Mission	Pierce	South west	Trade-Tech	Valley	West	LACCD
2000-2001	57.6%	56.0%	59.0%	55.1%	65.6%	50.6%	47.8%	62.2%	53.9%	56.6%
2001-2002	61.4%	60.0%	59.1%	52.8%	66.3%	53.0%	50.4%	67.8%	52.9%	59.4%
2002-2003	62.1%	66.2%	57.3%	44.7%	64.5%	51.8%	51.6%	70.5%	58.7%	60.2%
2003-2004	58.9%	62.8%	56.3%	51.8%	63.4%	51.0%	51.8%	65.7%	54.4%	58.2%
2004-2005	60.3%	64.8%	55.9%	49.6%	63.3%	50.5%	52.4%	69.3%	52.2%	59.0%
2005-2006	57.0%	64.1%	55.0%	52.5%	64.9%	50.8%	47.7%	67.8%	49.8%	58.1%
2006-2007	56.5%	58.6%	55.9%	52.0%	65.5%	51.5%	49.9%	69.3%	47.3%	58.1%
2007-2008	60.6%	61.4%	62.0%	48.4%	66.9%	50.2%	46.5%	71.8%	53.8%	59.1%
2008-2009	58.4%	62.2%	60.7%	51.7%	66.6%	57.5%	45.0%	69.9%	53.0%	59.0%
2009-2010	53.9%	67.1%	59.1%	54.5%	68.6%	60.2%	49.2%	70.1%	54.7%	61.6%
2010-2011	46.3%	68.5%	59.3%	59.2%	69.7%	57.4%	61.4%	73.7%	48.6%	64.3%
All	58.6%	63.1%	58.2%	51.9%	66.1%	52.9%	50.2%	68.7%	53.0%	59.4%
Asian	67.7%	69.6%	68.4%	63.2%	73.5%	63.6%	60.4%	76.4%	66.7%	70.0%
Black	45.0%	60.4%	48.4%	49.0%	58.7%	50.6%	42.0%	53.6%	47.8%	47.8%
Hispanic	56.0%	61.5%	58.3%	50.6%	61.9%	61.2%	55.6%	61.5%	57.3%	58.5%
White	67.9%	67.7%	62.6%	65.3%	71.3%	52.7%	56.1%	79.6%	62.5%	73.4%
Female	61.7%	65.4%	61.5%	54.5%	69.8%	54.6%	50.7%	71.6%	55.6%	61.6%
Male	53.7%	59.2%	53.3%	47.4%	61.3%	48.5%	49.4%	63.7%	48.9%	55.6%

Figure C4: Basic Skills Math - Successful Course Completion

Academic Year	City	East	Harbor	Mission	Pierce	South west	Trade-Tech	Valley	West	LACCD
2000-2001	45.9%	50.0%	49.9%	43.7%	48.2%	49.5%	44.6%	48.9%	37.3%	47.1%
2001-2002	47.5%	52.1%	53.9%	37.8%	51.8%	48.8%	44.9%	52.1%	39.9%	48.6%
2002-2003	47.5%	55.5%	50.2%	40.1%	52.6%	55.4%	47.7%	51.7%	46.5%	50.4%
2003-2004	45.2%	54.3%	50.4%	47.5%	52.5%	47.2%	46.0%	52.0%	42.4%	49.1%
2004-2005	45.6%	56.4%	48.2%	54.6%	51.5%	47.4%	47.7%	45.5%	45.9%	49.6%
2005-2006	43.5%	55.0%	46.3%	53.2%	54.9%	41.0%	49.3%	44.1%	39.8%	48.3%
2006-2007	42.5%	52.0%	46.4%	49.7%	52.2%	40.1%	49.1%	46.7%	40.6%	47.3%
2007-2008	42.1%	50.9%	46.1%	48.7%	53.3%	39.2%	45.9%	46.7%	38.7%	46.4%
2008-2009	44.5%	50.0%	52.0%	50.3%	54.4%	37.6%	43.6%	50.7%	38.0%	47.1%
2009-2010	41.5%	48.4%	52.3%	48.1%	54.4%	30.4%	44.2%	48.6%	39.9%	45.6%
2010-2011	44.2%	49.5%	51.8%	46.8%	57.6%	41.9%	50.4%	48.2%	39.7%	48.3%
All	44.5%	52.2%	49.7%	47.4%	53.2%	43.3%	46.6%	48.7%	40.8%	48.0%
Asian	55.9%	70.5%	56.6%	61.3%	61.9%	51.9%	65.8%	60.2%	62.4%	61.7%
Black	31.8%	43.1%	40.7%	41.6%	43.3%	41.1%	37.7%	37.1%	34.1%	38.4%
Hispanic	39.4%	50.8%	49.3%	45.3%	47.2%	52.4%	52.2%	43.4%	44.4%	47.6%
White	64.5%	59.1%	54.3%	60.5%	60.1%	60.6%	58.6%	60.2%	55.5%	60.0%
Female	45.9%	52.9%	51.5%	48.9%	55.7%	43.7%	45.8%	50.6%	42.4%	48.9%
Male	42.4%	50.9%	46.5%	44.5%	49.0%	42.0%	48.2%	45.3%	37.9%	46.1%

**Los Angeles Community College District
Internal Scan for LACCD Strategic Plan, 2012-2017**

Figure C5: ESL - Successful Course Completion

Academic Year	City	East	Harbor	Mission	Pierce	South west	Trade-Tech	Valley	West	LACCD
2000-2001	74.5%	75.3%	75.6%	69.8%	76.4%	62.3%	62.6%	75.8%	68.2%	72.9%
2001-2002	74.2%	77.6%	78.6%	73.0%	78.9%	65.9%	64.5%	80.7%	67.2%	74.8%
2002-2003	77.1%	75.2%	73.2%	76.3%	84.3%	53.4%	63.7%	78.4%	73.0%	75.1%
2003-2004	78.7%	74.4%	73.2%	73.7%	82.0%	57.8%	58.5%	79.2%	72.5%	75.5%
2004-2005	78.5%	78.9%	76.9%	76.6%	81.6%	51.1%	63.0%	80.4%	67.2%	76.2%
2005-2006	75.7%	80.2%	70.4%	72.8%	80.4%	51.9%	49.5%	81.3%	76.5%	75.2%
2006-2007	74.8%	78.4%	79.7%	73.9%	81.1%	58.0%	48.3%	80.7%	77.4%	75.1%
2007-2008	75.9%	77.6%	79.8%	75.2%	81.8%	56.4%	61.9%	81.8%	79.3%	76.4%
2008-2009	77.7%	75.7%	80.6%	72.2%	83.8%	50.8%	64.0%	78.8%	72.6%	76.1%
2009-2010	75.9%	73.8%	72.5%	76.6%	83.4%	46.7%	57.2%	84.9%	73.0%	76.2%
2010-2011	76.0%	77.5%	65.7%	74.2%	85.0%	68.1%	63.3%	82.2%	74.9%	77.2%
All	76.3%	76.8%	75.2%	74.1%	81.8%	57.2%	60.6%	80.2%	72.9%	75.5%
Asian	72.8%	78.1%	81.5%	79.4%	84.3%	70.4%	72.6%	79.7%	77.9%	77.3%
Black	65.6%	74.4%	70.4%	62.5%	80.7%	44.4%	59.2%	66.8%	70.7%	56.4%
Hispanic	67.5%	72.7%	71.1%	71.3%	74.5%	61.4%	58.5%	69.8%	69.8%	68.2%
White	81.7%	83.2%	86.2%	80.7%	83.6%	70.0%	75.0%	85.2%	78.5%	82.8%
Female	78.8%	79.2%	76.9%	75.4%	83.8%	58.8%	61.6%	83.2%	75.0%	77.7%
Male	70.6%	72.3%	71.0%	70.1%	78.0%	53.0%	58.6%	72.0%	68.1%	70.3%

Figure C6: Successful Course Completion Rate in Transfer Level Courses

Academic Year	City	East	Harbor	Mission	Pierce	South west	Trade-Tech	Valley	West	LACCD
2000-2001	70.3%	72.6%	71.5%	73.2%	69.8%	65.8%	76.1%	69.8%	74.2%	71.6%
2001-2002	71.4%	73.3%	73.2%	73.3%	72.0%	68.7%	70.0%	71.5%	68.0%	71.6%
2002-2003	72.5%	71.2%	70.0%	73.7%	71.4%	66.0%	71.9%	71.8%	67.2%	71.0%
2003-2004	69.7%	68.9%	69.3%	73.9%	70.5%	65.8%	71.6%	71.5%	64.9%	69.7%
2004-2005	70.9%	68.8%	70.9%	72.1%	71.3%	65.7%	71.6%	70.8%	64.4%	69.9%
2005-2006	70.1%	68.0%	70.1%	71.6%	71.0%	65.4%	68.0%	69.6%	62.7%	68.9%
2006-2007	70.1%	67.8%	71.6%	69.4%	70.4%	63.9%	65.9%	68.6%	63.5%	68.4%
2007-2008	69.3%	67.3%	69.8%	67.3%	70.0%	64.8%	65.1%	69.1%	63.0%	67.8%
2008-2009	69.7%	68.5%	71.0%	68.1%	70.6%	64.0%	67.1%	69.1%	63.8%	68.5%
2009-2010	69.1%	67.6%	70.3%	70.0%	72.2%	62.8%	67.0%	70.1%	62.5%	68.6%
2010-2011	68.7%	68.5%	69.7%	71.0%	72.2%	63.8%	68.8%	71.0%	62.4%	69.1%
All	70.2%	69.2%	70.7%	71.0%	71.1%	65.1%	69.6%	70.3%	65.2%	69.5%
Asian	75.6%	79.5%	74.9%	77.5%	74.5%	77.2%	81.2%	74.5%	73.5%	76.4%
Black	61.6%	67.6%	64.1%	66.5%	60.2%	63.1%	62.7%	63.4%	59.3%	62.1%
Hispanic	65.3%	66.3%	68.7%	69.5%	64.3%	71.0%	70.8%	65.3%	66.4%	66.9%
White	79.0%	78.3%	75.3%	77.2%	75.4%	82.3%	80.8%	75.7%	75.9%	76.4%
Female	71.9%	70.0%	71.7%	72.6%	73.3%	65.5%	69.4%	72.0%	65.3%	70.6%
Male	67.9%	68.1%	69.1%	68.4%	68.3%	64.4%	69.8%	67.9%	65.2%	68.0%

**Los Angeles Community College District
Internal Scan for LACCD Strategic Plan, 2012-2017**

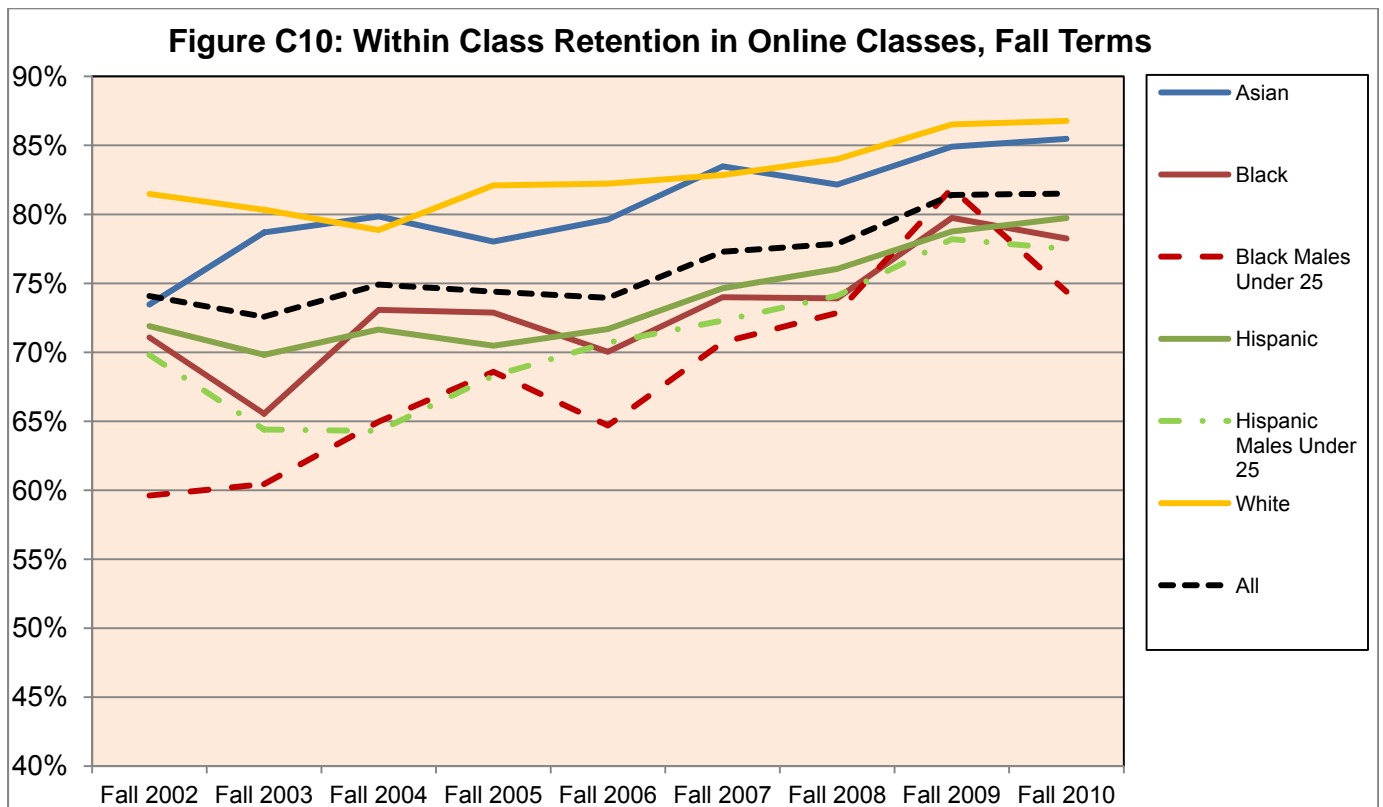
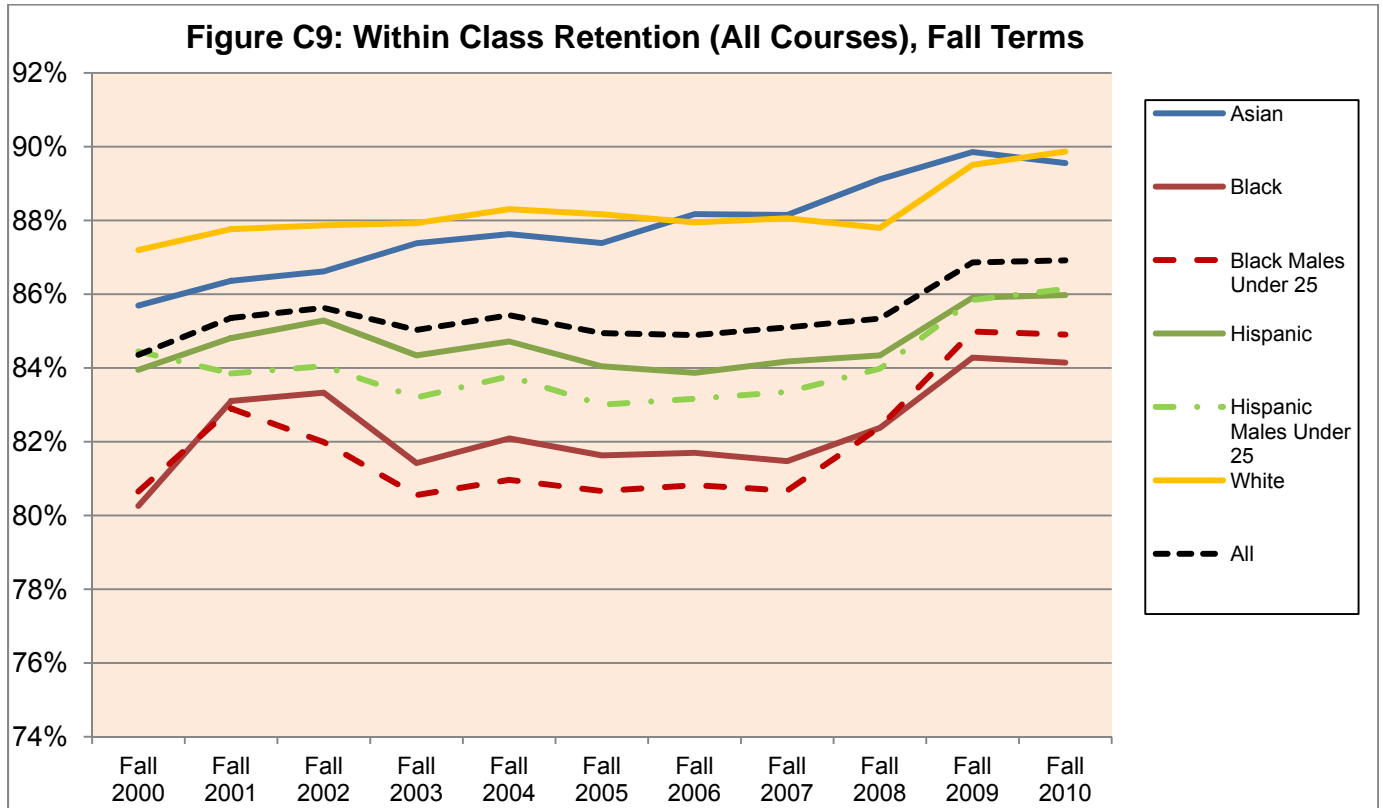
Figure C7: Transfer Level English - Successful Course Completion

Academic Year	City	East	Harbor	Mission	Pierce	South west	Trade-Tech	Valley	West	LACCD
2000-2001	68.0%	69.4%	67.5%	64.6%	71.7%	54.0%	59.9%	70.7%	66.4%	67.6%
2001-2002	67.4%	69.5%	73.2%	63.2%	72.6%	65.3%	66.1%	75.7%	64.4%	69.5%
2002-2003	67.6%	69.1%	70.6%	67.1%	72.5%	62.7%	68.3%	77.4%	67.8%	70.0%
2003-2004	68.3%	69.8%	68.7%	69.1%	72.7%	58.5%	66.2%	75.4%	66.2%	69.3%
2004-2005	67.9%	66.2%	68.4%	67.4%	73.6%	62.4%	64.0%	75.8%	63.2%	68.0%
2005-2006	66.0%	63.7%	66.3%	68.3%	71.3%	60.9%	58.9%	73.4%	63.4%	66.0%
2006-2007	66.3%	64.4%	69.3%	66.4%	71.8%	57.8%	57.6%	71.3%	60.7%	66.0%
2007-2008	65.8%	62.3%	66.5%	71.3%	72.4%	55.6%	53.4%	71.0%	58.6%	64.8%
2008-2009	66.2%	63.9%	68.3%	68.4%	74.9%	58.6%	58.8%	70.8%	59.5%	66.0%
2009-2010	67.1%	65.2%	66.4%	71.2%	75.4%	54.0%	53.7%	70.6%	60.6%	66.2%
2010-2011	66.5%	67.4%	68.8%	72.1%	75.2%	56.2%	59.3%	73.9%	63.9%	68.0%
All	66.9%	66.3%	68.5%	68.6%	73.2%	58.7%	61.0%	73.2%	63.0%	67.3%
Asian	72.2%	78.2%	72.8%	76.8%	75.0%	64.7%	74.1%	77.8%	71.4%	75.1%
Black	61.2%	59.2%	62.2%	68.5%	65.6%	58.4%	58.3%	66.6%	58.3%	59.8%
Hispanic	61.8%	63.2%	65.8%	66.4%	65.8%	59.1%	59.9%	67.5%	62.9%	63.7%
White	76.8%	73.7%	75.2%	76.4%	77.7%	80.2%	77.3%	79.3%	75.2%	77.1%
Female	68.1%	67.5%	70.6%	69.9%	74.5%	59.0%	60.4%	74.3%	63.3%	68.2%
Male	65.3%	64.4%	65.0%	66.5%	71.3%	58.0%	62.1%	71.6%	62.4%	65.9%

Figure C8: Transfer Level Math - Successful Course Completion

Academic Year	City	East	Harbor	Mission	Pierce	South west	Trade-Tech	Valley	West	LACCD
2000-2001	55.5%	57.5%	57.1%	67.9%	60.4%	80.9%	59.4%	52.6%	47.1%	58.0%
2001-2002	52.8%	63.8%	60.4%	56.9%	58.6%	68.9%	59.1%	55.2%	54.9%	58.7%
2002-2003	56.4%	63.5%	60.3%	58.9%	64.3%	67.5%	63.6%	57.9%	52.0%	60.9%
2003-2004	57.4%	61.7%	59.8%	48.4%	64.0%	66.3%	70.3%	53.3%	47.2%	59.4%
2004-2005	56.2%	60.1%	64.3%	56.9%	65.4%	63.1%	64.0%	55.8%	51.6%	59.9%
2005-2006	54.2%	56.8%	60.9%	56.1%	64.3%	62.0%	54.5%	58.1%	52.3%	58.1%
2006-2007	54.1%	57.2%	64.9%	57.8%	61.0%	56.6%	50.4%	55.5%	48.7%	57.2%
2007-2008	51.6%	56.7%	64.8%	58.7%	61.0%	59.2%	56.5%	55.6%	46.2%	57.2%
2008-2009	53.0%	60.4%	59.5%	58.2%	62.0%	56.3%	51.9%	52.2%	46.5%	57.5%
2009-2010	51.5%	59.0%	62.7%	60.5%	64.1%	46.8%	50.6%	51.9%	46.7%	57.3%
2010-2011	51.3%	56.0%	62.0%	57.8%	63.5%	52.1%	56.1%	53.7%	46.8%	56.5%
All	54.0%	59.2%	61.5%	58.3%	62.6%	62.6%	58.4%	54.7%	49.1%	58.2%
Asian	59.5%	73.7%	65.7%	69.7%	65.2%	74.5%	70.3%	61.8%	59.2%	67.3%
Black	41.3%	54.3%	52.8%	48.8%	51.1%	62.5%	54.3%	45.7%	40.1%	51.6%
Hispanic	46.6%	51.3%	58.6%	55.9%	53.6%	61.6%	57.6%	45.6%	46.8%	51.6%
White	65.6%	64.1%	65.6%	65.7%	67.7%	83.3%	70.7%	61.7%	63.8%	65.3%
Female	55.8%	60.7%	62.7%	60.6%	65.7%	62.7%	56.9%	56.7%	49.5%	59.8%
Male	52.1%	57.6%	60.2%	55.2%	60.0%	62.3%	60.2%	52.8%	48.7%	56.4%

**Los Angeles Community College District
Internal Scan for LACCD Strategic Plan, 2012-2017**



**Los Angeles Community College District
Internal Scan for LACCD Strategic Plan, 2012-2017**

Figure C11: Fall to Fall Persistence by Ethnicity

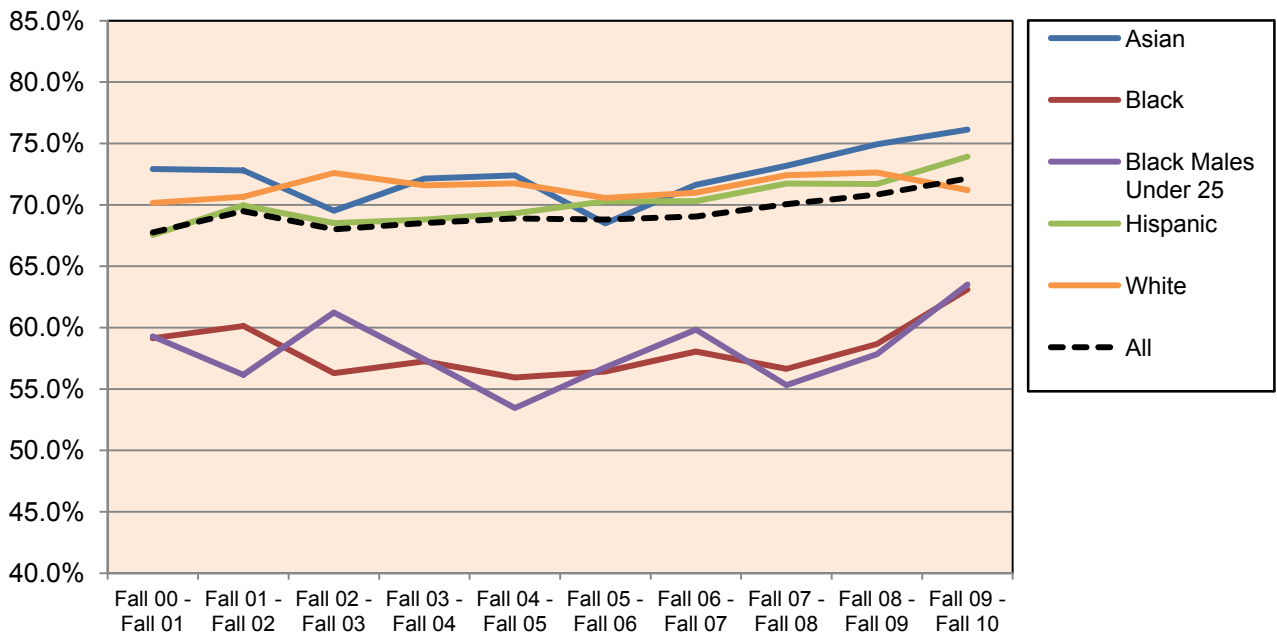
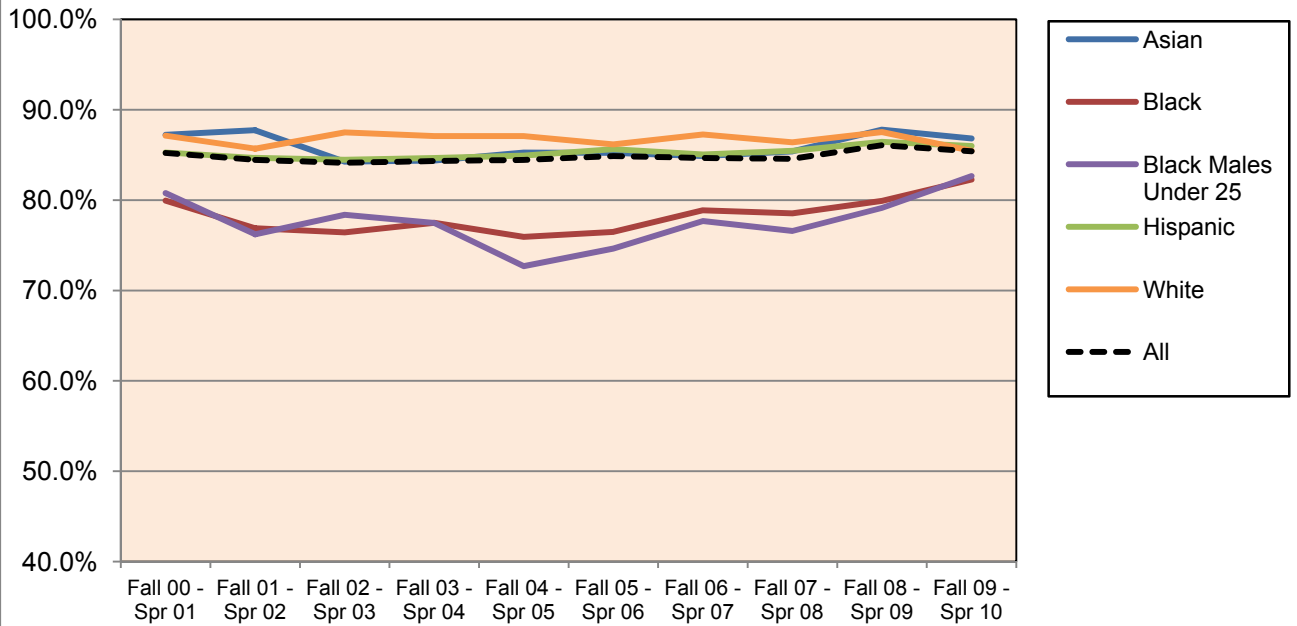


Figure C12 Fall to Spring Persistence by Ethnicity



**Los Angeles Community College District
Internal Scan for LACCD Strategic Plan, 2012-2017**

Figure C13: Degrees and Certificates by Ethnicity

Award Type	Fiscal Year	Asian	Black	Hispanic	White	American Indian/Other Non-White	Unknown/Decline to State	All Ethnicities
AA/AS	2000-01	704	996	2,169	1,021	90	227	5,207
	2001-02	795	851	2,337	1,013	111	253	5,360
	2002-03	795	1,046	2,453	1,050	140	239	5,723
	2003-04	964	965	2,498	1,092	137	254	5,910
	2004-05	1,061	1,081	2,664	1,205	155	250	6,416
	2005-06	1,019	987	2,554	1,248	172	264	6,244
	2006-07	1,005	872	2,531	1,124	164	228	5,924
	2007-08	1,011	826	2,639	1,086	138	276	5,976
	2008-09	1,037	845	2,561	1,008	170	279	5,900
	2009-10	968	711	2,392	970	134	290	5,465
	2010-11	949	633	2,382	894	156	295	5,309
Total (over 11 years)	10,308	9,813	27,179	11,711	1,566	2,855	63,432	
Certif. 18+	2000-01	327	327	882	505	33	219	2,293
	2001-02	333	276	866	372	33	95	1,975
	2002-03	309	377	866	383	38	99	2,072
	2003-04	288	293	704	275	29	73	1,662
	2004-05	266	307	740	288	20	46	1,667
	2005-06	228	294	684	286	24	58	1,574
	2006-07	234	282	655	219	39	58	1,487
	2007-08	208	272	652	201	28	52	1,413
	2008-09	322	242	943	244	35	71	1,857
	2009-10	415	272	1,218	373	44	126	2,448
	2010-11	614	352	1,592	569	80	190	3,397
Total (over 11 years)	3,556	3,295	9,806	3,718	404	1,087	21,866	
Skill Cert.	2000-01	151	467	570	315	26	67	1,596
	2001-02	241	542	1,007	594	21	116	2,521
	2002-03	286	608	1,037	526	42	106	2,605
	2003-04	294	526	1,046	424	48	113	2,451
	2004-05	297	478	1,099	508	41	94	2,517
	2005-06	368	521	1,388	632	38	102	3,049
	2006-07	473	463	1,716	794	68	306	3,820
	2007-08	422	383	1,454	578	43	556	3,436
	2008-09	398	320	1,119	377	45	387	2,646
	2009-10	313	206	1,029	189	24	283	2,044
	2010-11	286	166	598	107	12	102	1,271
Total (over 11 years)	3,529	4,681	12,063	5,045	408	2,235	27,961	

**Los Angeles Community College District
Internal Scan for LACCD Strategic Plan, 2012-2017**

Figure C14: Number of Degrees by Student Ethnicity

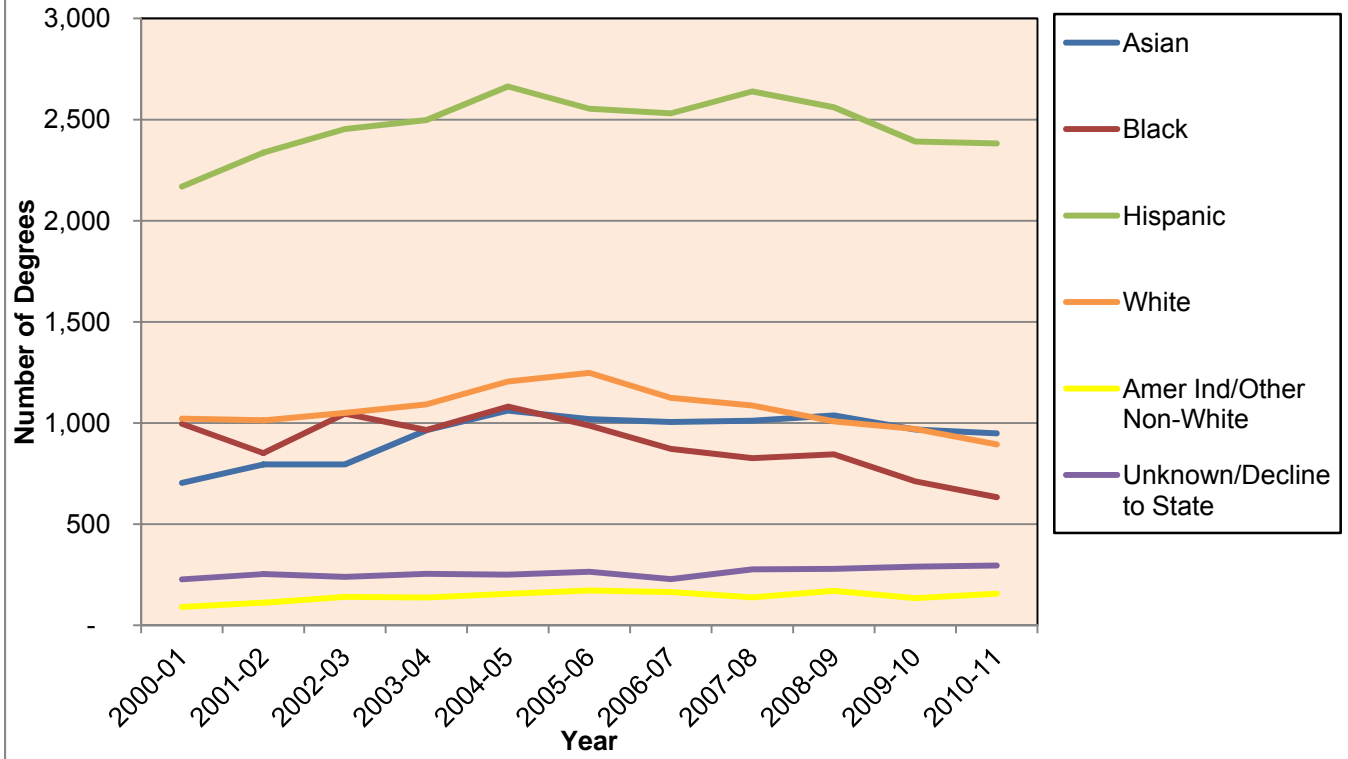
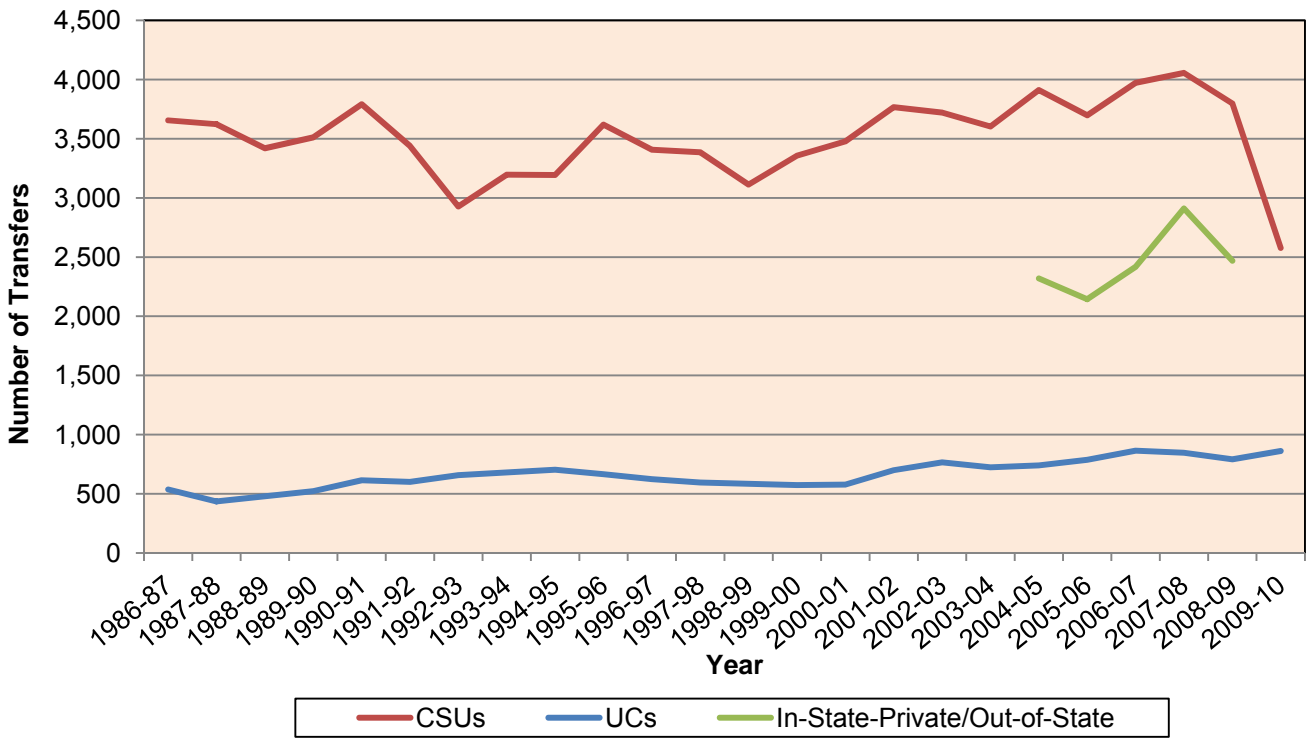
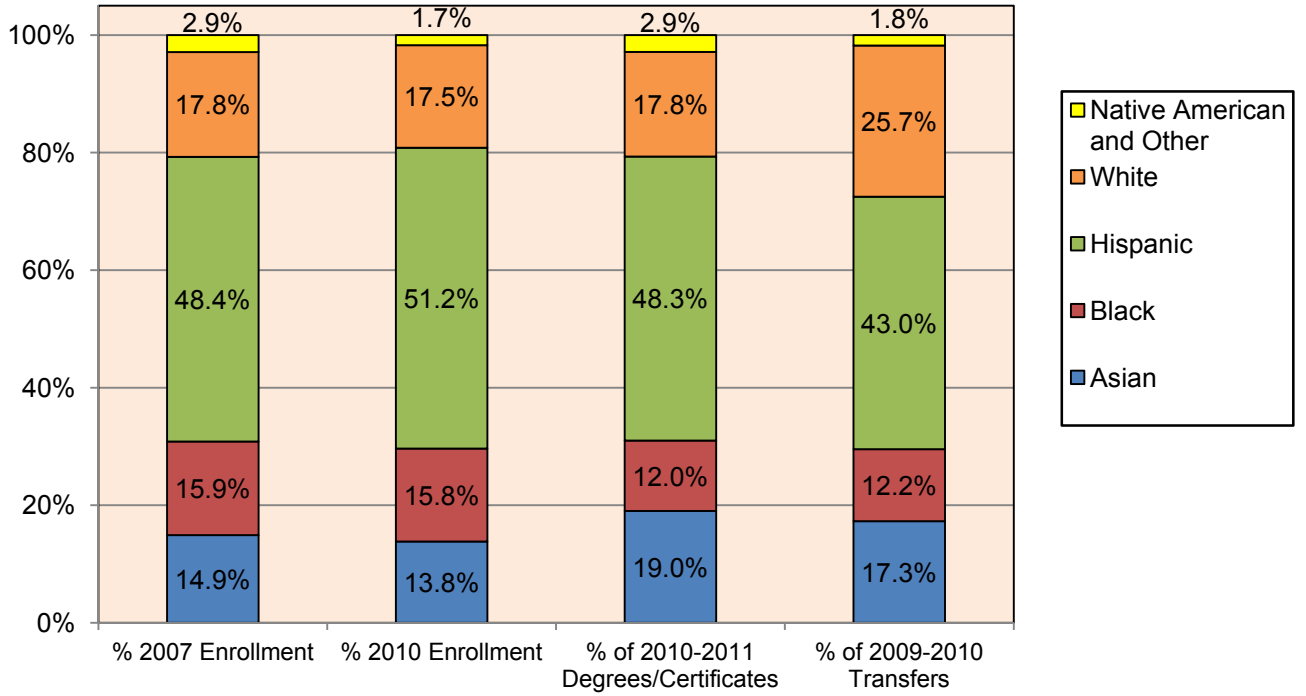


Figure C15: Full-Year Transfers to Four-Year Institutions



**Los Angeles Community College District
Internal Scan for LACCD Strategic Plan, 2012-2017**

Figure C16: % Ethnicity of Enrolled Students vs. Those Who Graduate/Transfer



**Los Angeles Community College District
Internal Scan for LACCD Strategic Plan, 2012-2017**

Persistence and Completion among Degree-Seeking Students

First-Time Students Entering Los Angeles Community Colleges in Fall 2004

The cohort of students in these analyses was first-time students entering LACCD colleges in Fall 2004. Degree-seeking students were defined as:

1. Students who were 17-19 years old at the time of initial enrollment who attempted 12 or more units in the first year and/or
2. Students who identified a goal of degree or certificate completion or transfer to a university upon enrollment and completed 12 or more units within six years and/or
3. Students who demonstrated an intent to finish a program by completing 12 or more units and attempting a transfer- or degree-level English or Math course within six years.

□ Data sources: Institutional Research Data System (IRDS); National Clearinghouse transfer data

Figure C17: Persistence and Completion among Degree-Seeking Students by Gender (Fall 2004 Cohort)

	N (%)	Persistence		Successful Course Completion Rate	Completion (within 6 years from entry)				Transfer Prepared**
		To Second Term	To Second Year		Certificate	Associate Degree	Transfer	Program Completion Rate*	
Female	6,133 (56.4%)	85.4%	73.0%	67.4%	5.2%	19.9%	25.4%	36.2%	6.1%
Male	4,739 (43.6%)	82.6%	68.4%	65.5%	4.4%	13.4%	25.1%	32.5%	6.1%
Total	10,872	84.2%	71.0%	66.7%	4.8%	17.1%	25.3%	34.6%	6.1%

* Defined as the percent of degree-seekers who achieved certificate, degree or transfer (without double-counting those who achieved more than one outcome)

** Defined as degree seekers who did not achieve certificate, degree or transfer, but who completed 60 or more transferrable units

Sources: Institutional Research Data System (IRDS), National Clearinghouse transfer data

**Los Angeles Community College District
Internal Scan for LACCD Strategic Plan, 2012-2017**

Figure C18: Persistence and Completion among Degree-Seeking Students by Ethnicity (Fall 2004 Cohort)

	N (%)	Persistence		Successful Course Completion Rate	Completion (within 6 years from entry)				Transfer Prepared**
		To Second Term	To Second Year		Certificate	Associate Degree	Transfer	Program Completion Rate*	
African-American	1,363 (12.5%)	75.1%	58.7%	55.9%	3.5%	9.8%	19.2%	24.8%	3.1%
Asian	1,407 (12.9%)	86.6%	76.3%	73.3%	4.2%	21.0%	33.5%	45.1%	9.2%
Caucasian	1,905 (17.5%)	86.8%	74.4%	75.8%	4.4%	21.4%	41.5%	49.3%	5.9%
Hispanic	5,420 (49.9%)	84.6%	71.1%	63.7%	5.8%	16.0%	17.1%	27.6%	6.2%
Other	777 (7.1%)	86.5%	73.7%	69.4%	3.2%	19.3%	38.2%	45.3%	5.5%
Total	10,872	84.2%	71.0%	66.7%	4.8%	17.1%	25.3%	34.6%	6.1%

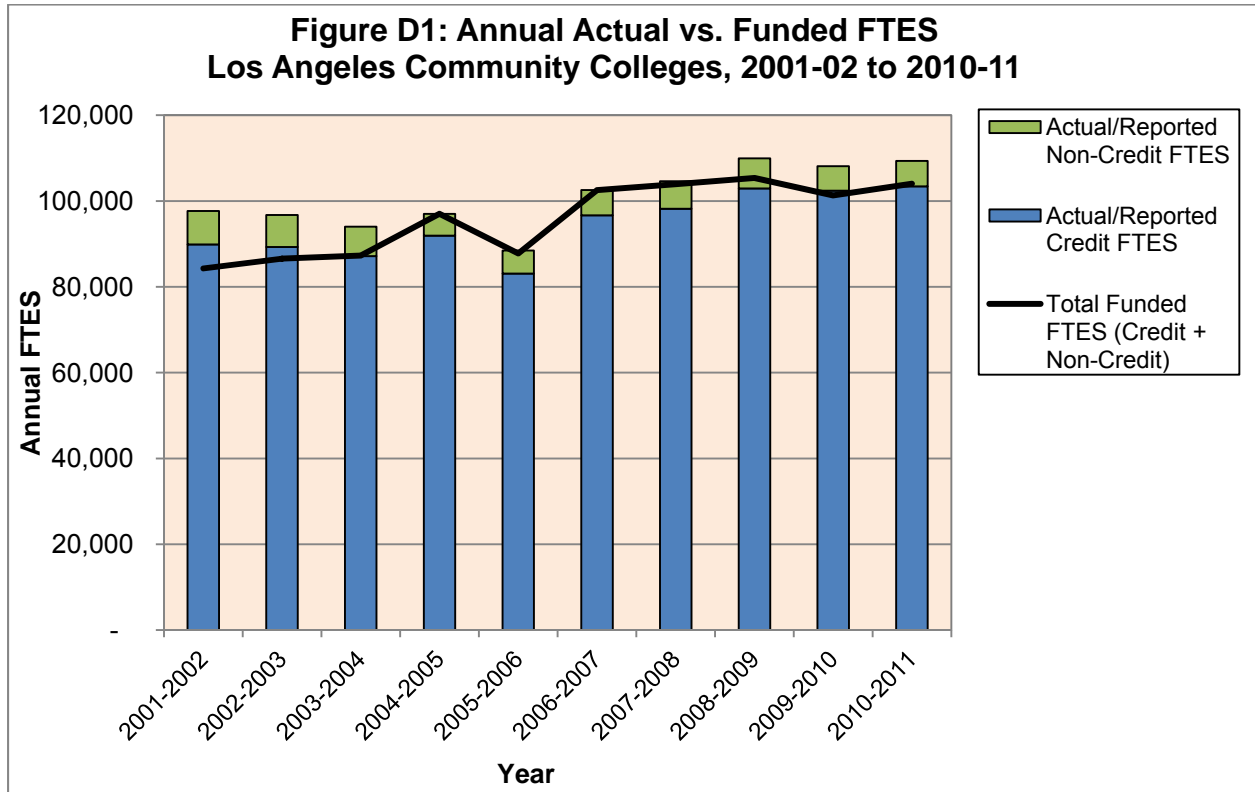
* Defined as the percent of degree-seekers who achieved certificate, degree or transfer (without double-counting those who achieved more than one outcome)

** Defined as degree seekers who did not achieve certificate, degree or transfer, but who completed 60 or more transferrable units

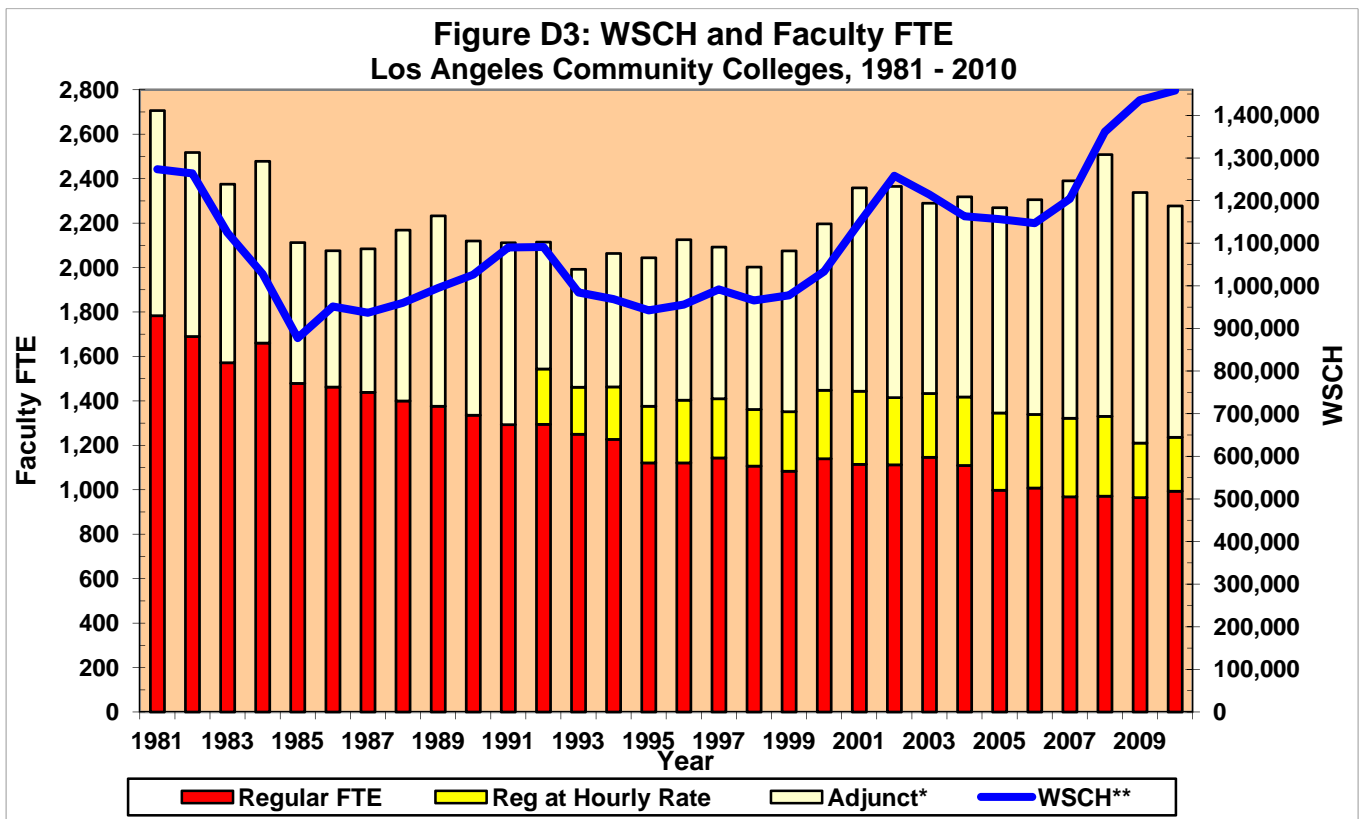
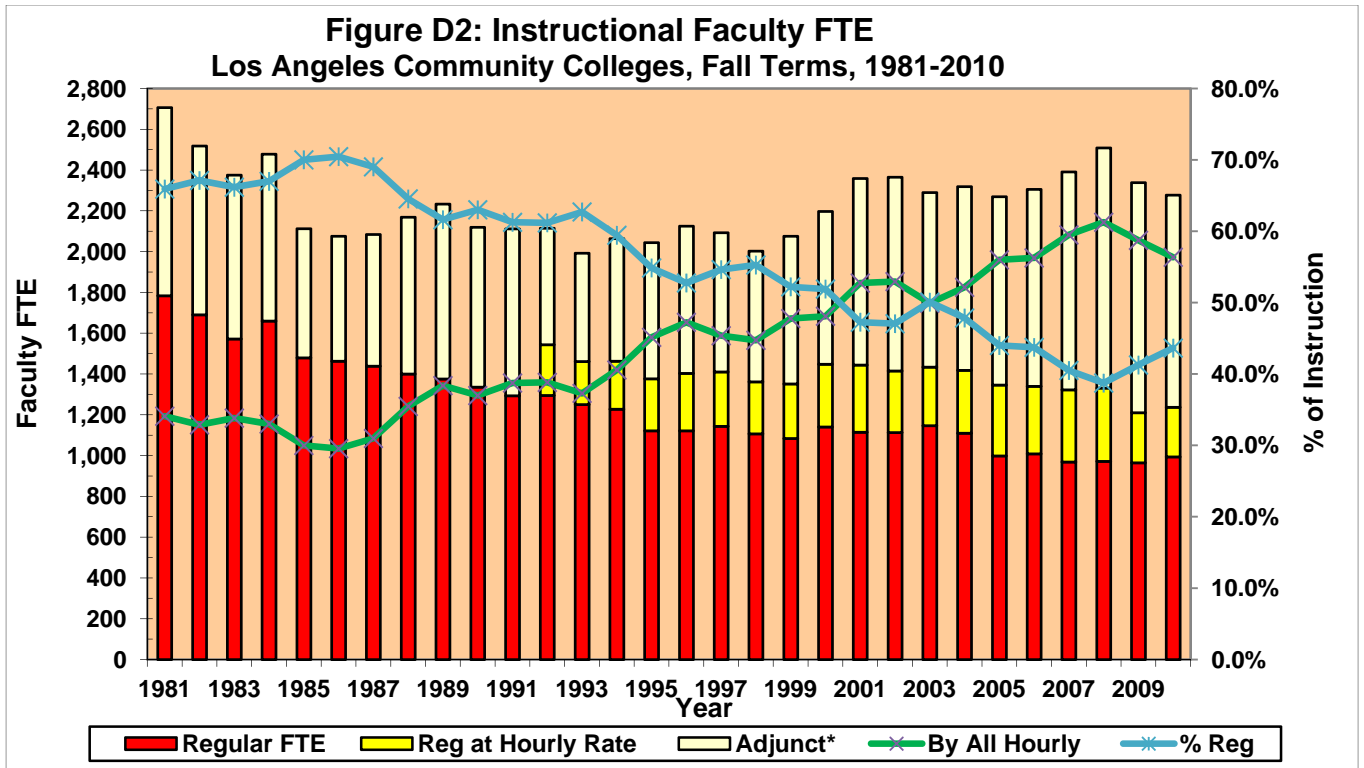
Sources: Institutional Research Data System (IRDS), National Clearinghouse transfer data

**Los Angeles Community College District
Internal Scan for LACCD Strategic Plan, 2012-2017**

D. Instructional Staffing and Fiscal Measures



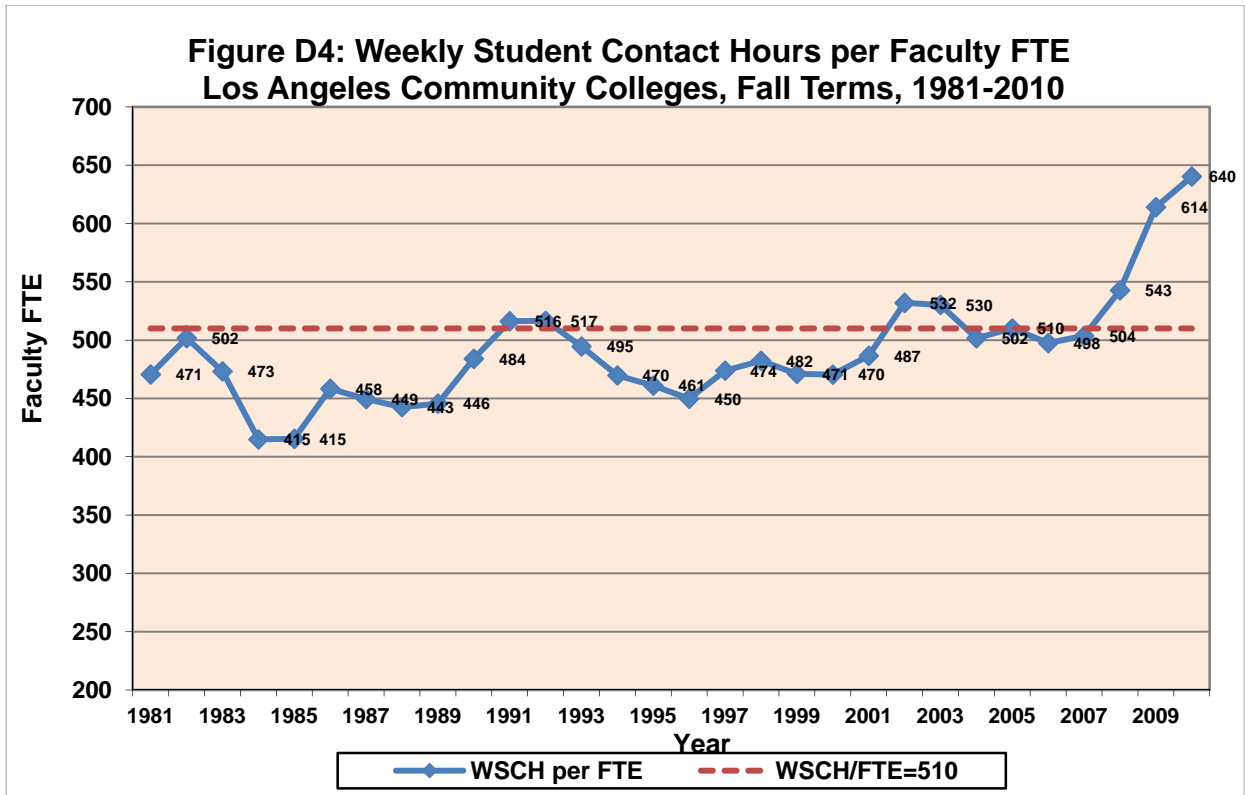
**Los Angeles Community College District
Internal Scan for LACCD Strategic Plan, 2012-2017**



*Prior to 1992 regular faculty teaching at hourly rate are included in the adjunct category.

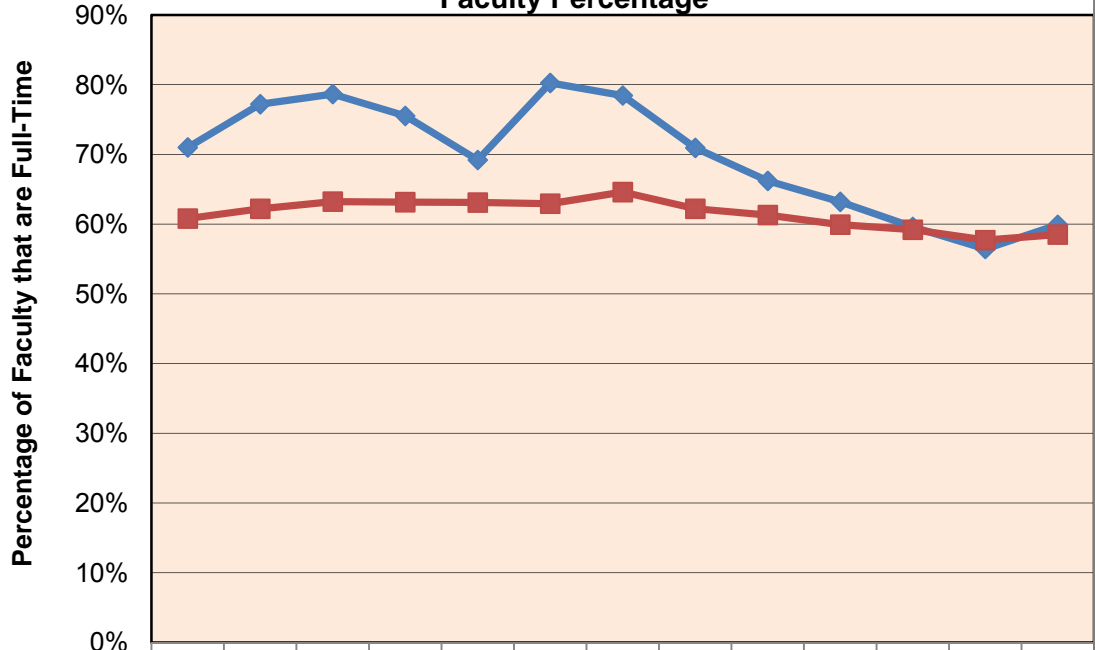
**Scaling of the WSCH line is such that it coincides with the total faculty FTE at those points where the average class size was approximately 34.

**Los Angeles Community College District
Internal Scan for LACCD Strategic Plan, 2012-2017**



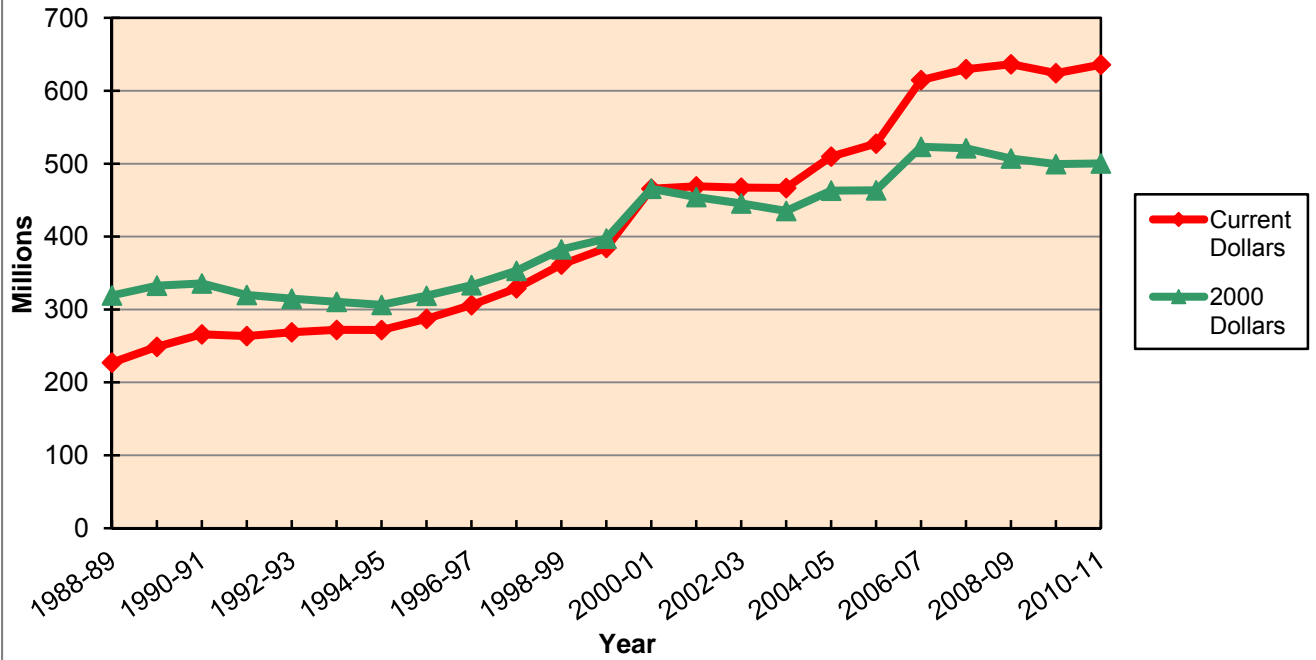
**Los Angeles Community College District
Internal Scan for LACCD Strategic Plan, 2012-2017**

Figure D5: LACCD vs Statewide Average for the Full-time Part-time Faculty Percentage



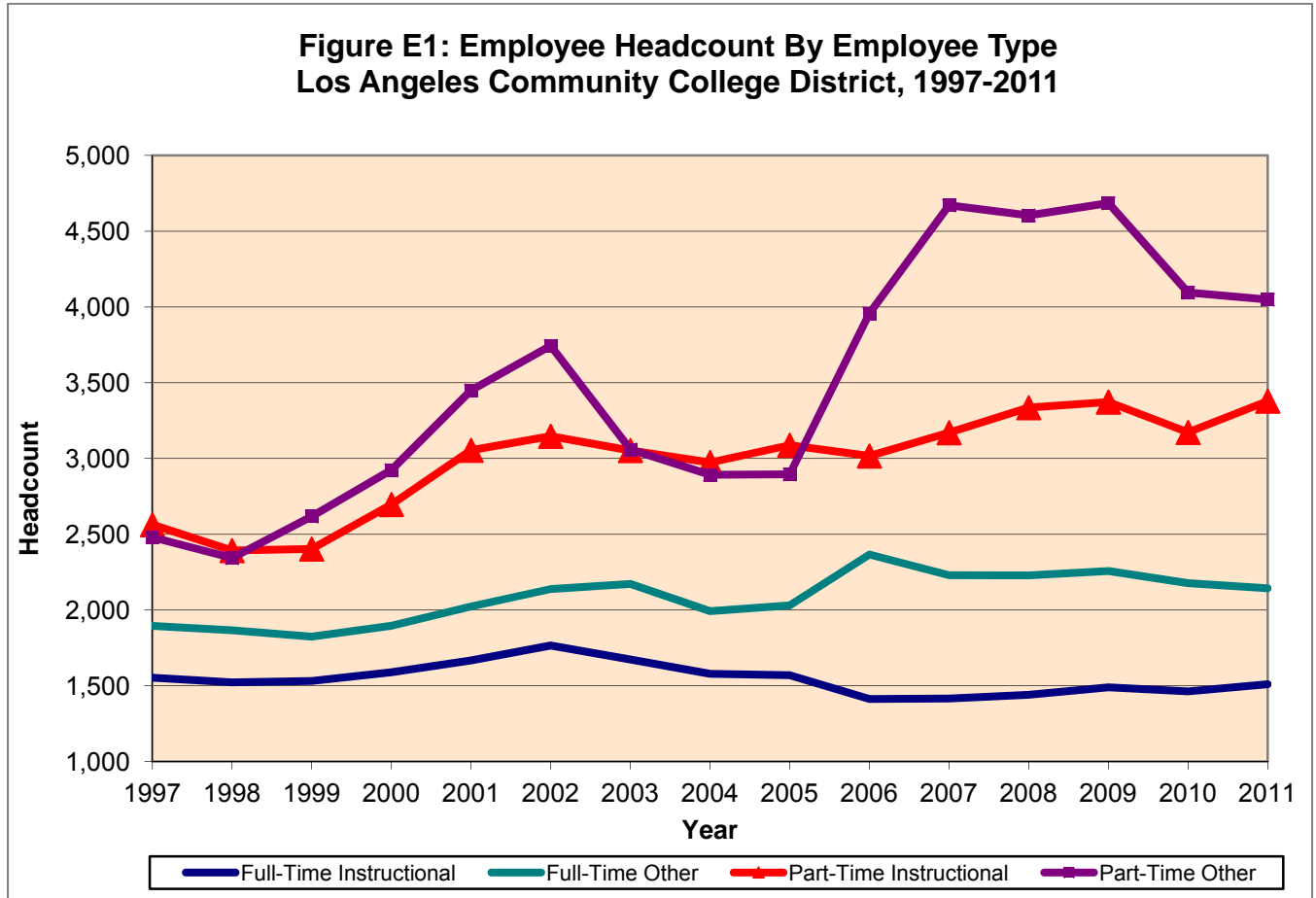
—◆— LACCD	71.0%	77.2%	78.7%	75.5%	69.2%	80.2%	78.4%	70.9%	66.2%	63.2%	59.6%	56.4%	59.9%
—■— Statewide Average	60.8%	62.2%	63.2%	63.2%	63.1%	62.9%	64.6%	62.2%	61.3%	59.9%	59.2%	57.7%	58.5%

**Figure D6: General Fund Income
Los Angeles Community Colleges, 1988-2010**



**Los Angeles Community College District
Internal Scan for LACCD Strategic Plan, 2012-2017**

E. Human Resources



Notes:

Full-Time Instructional includes Regular Full-Time Faculty (Instructors, Counselors, Librarians, and Department Chairs)

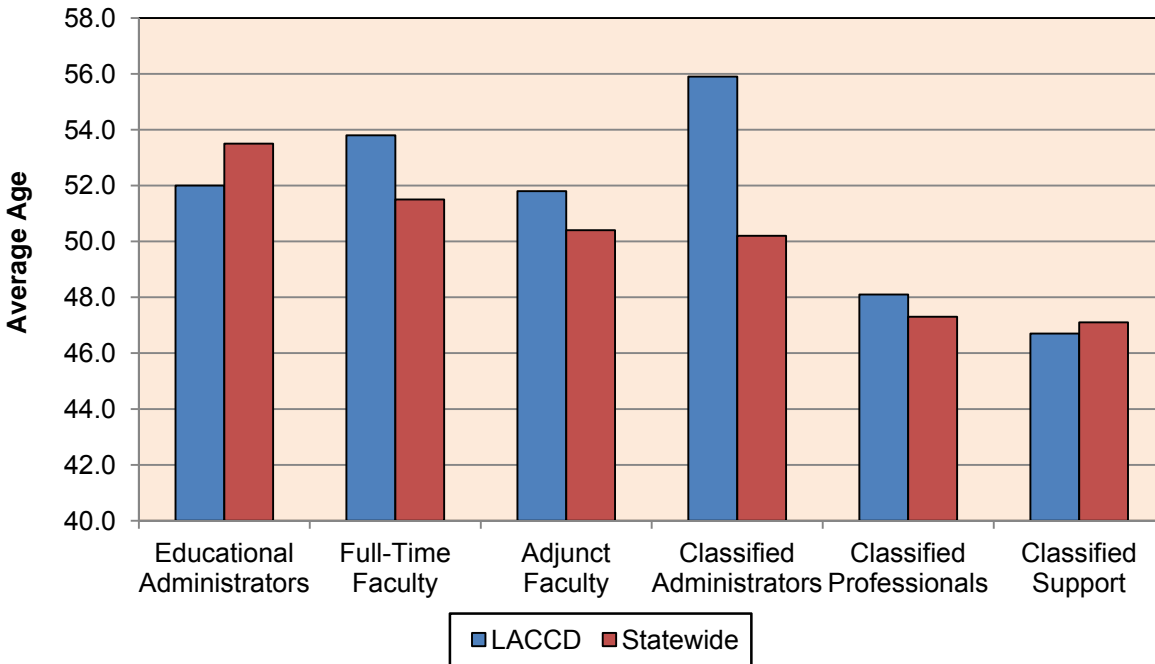
Full-Time Other includes Certificated Administrators and Classified Staff

Part-Time Instructional includes Adjunct Faculty

Part-Time Other includes Unclassified Staff and Student Workers

**Los Angeles Community College District
Internal Scan for LACCD Strategic Plan, 2012-2017**

**Figure E2: Average Age of Employees by Employee Category
LACCD vs. Statewide, Fall 2010**



<u>Full-Time Faculty</u>	<35	35-44	45-54	55-64	65+	Average Age
LACCD	6.0%	17.1%	23.9%	38.7%	14.3%	53.8
Statewide	5.6%	21.8%	29.4%	34.8%	8.4%	51.5
<u>Adjunct Faculty</u>	<35	35-44	45-54	55-64	65+	Average Age
LACCD	12.6%	21.5%	22.1%	24.7%	19.1%	51.8
Statewide	13.4%	21.2%	24.6%	27.3%	13.5%	50.4

**Los Angeles Community College District
Internal Scan for LACCD Strategic Plan, 2012-2017**

**Figure E3: Average Age of Regular and Adjunct Faculty
Los Angeles Community Colleges, Fall Terms 2000-2010**

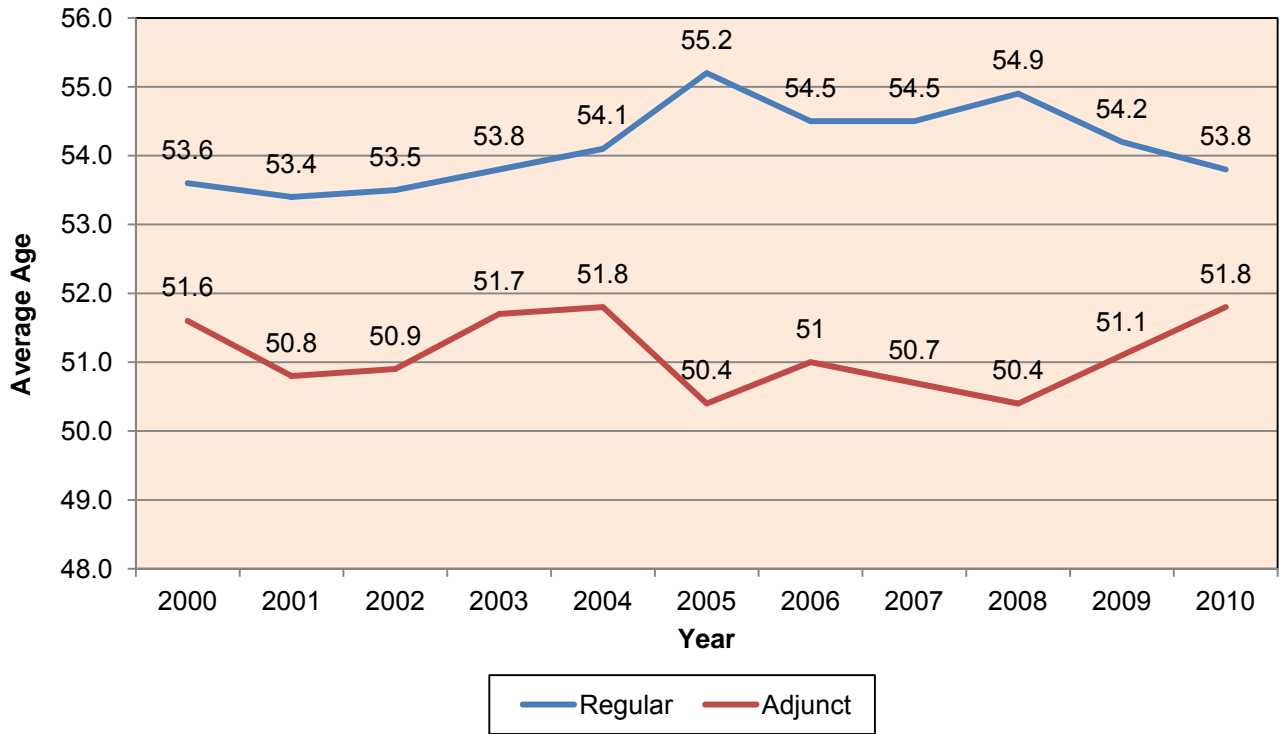
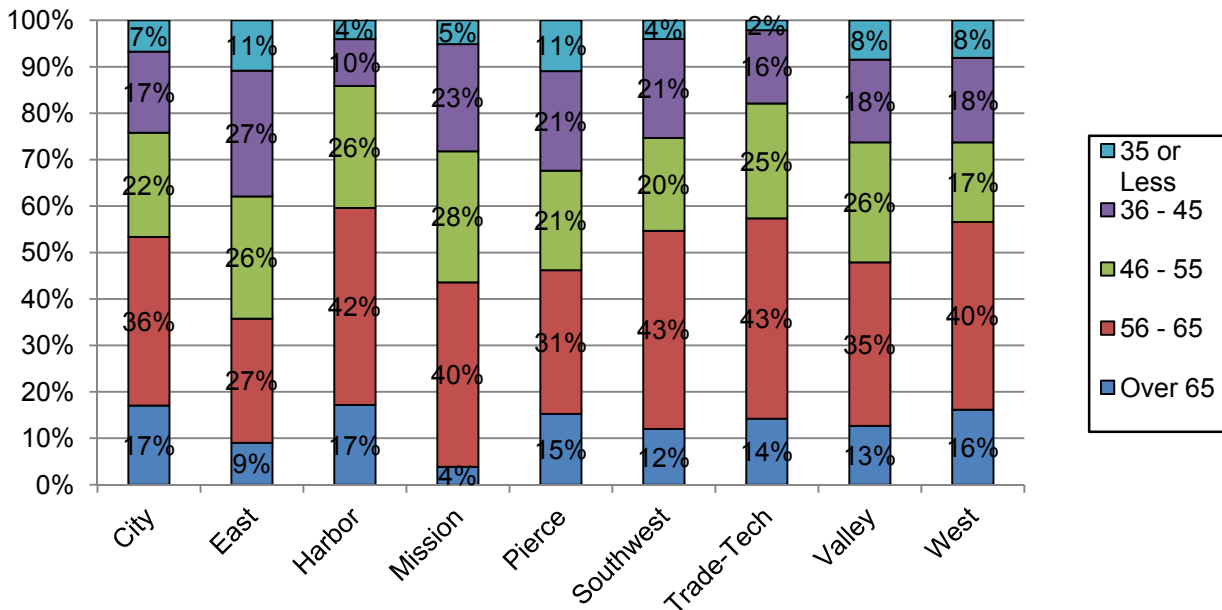
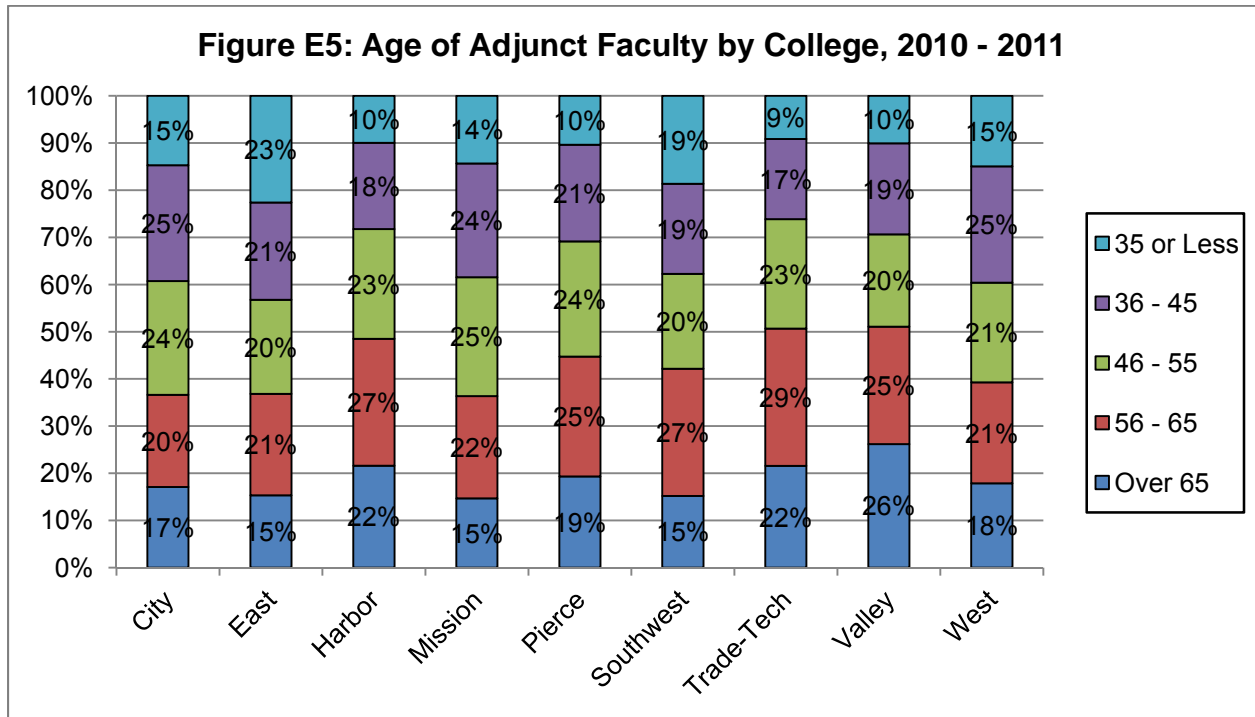


Figure E4: Age of Regular Faculty by College, 2010 - 2011



**Los Angeles Community College District
Internal Scan for LACCD Strategic Plan, 2012-2017**

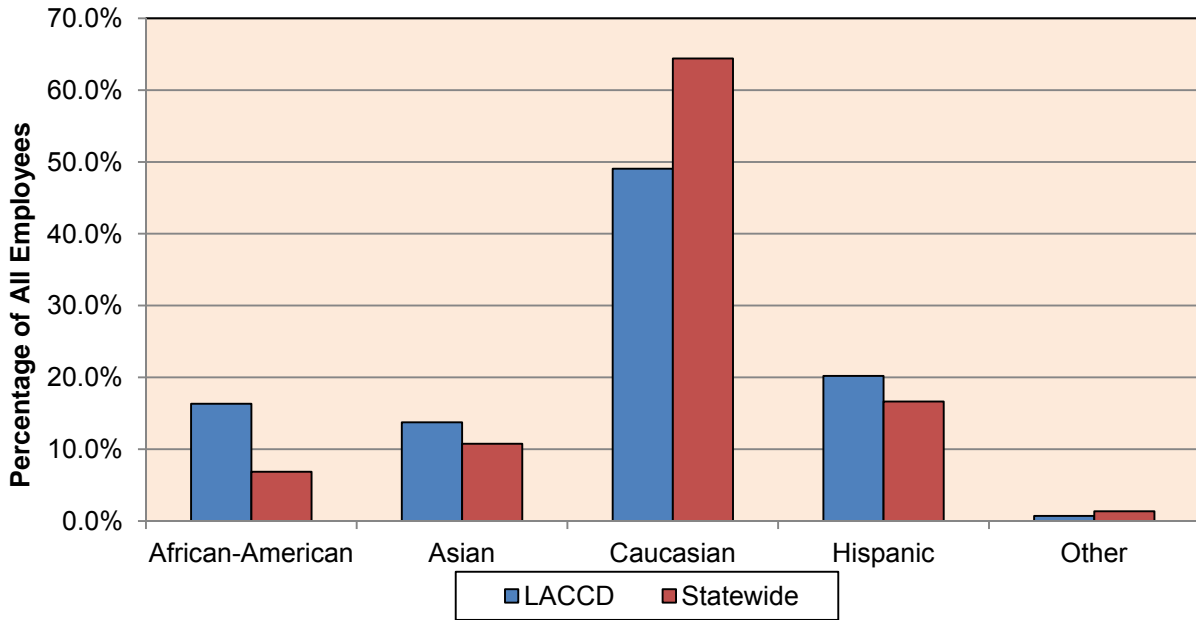


**Figure E6:
Regular Faculty Hires for 2008 - 2010 (Included in Fall 2008 - 2010 FON Submit)**

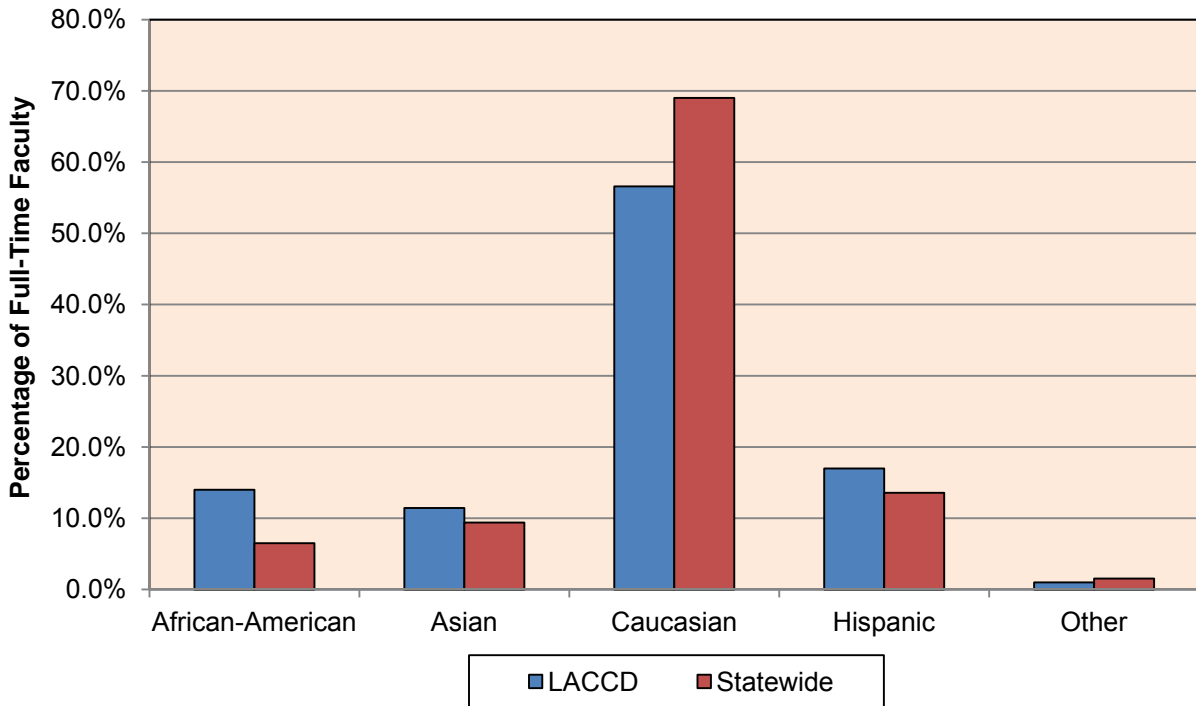
	City	East	Harbor	Mission	Pierce	South-west	Trade-Tech	Valley	West	District Total
2008	3	21	3	8	11	9	15	9	3	82
2009	5	20	3	6	25	7	6	13	5	90
2010	16	18	5	7	22	6	6	24	7	111

**Los Angeles Community College District
Internal Scan for LACCD Strategic Plan, 2012-2017**

**Figure E7: Ethnicity of All Employees
LACCD vs. Statewide, Fall 2010**



**Figure E8: Ethnicity of Full-Time Faculty
LACCD vs. Statewide, Fall 2010**



**Los Angeles Community College District
Internal Scan for LACCD Strategic Plan, 2012-2017**

Figure E9: Ethnicity of Full-Time Faculty

LACCD	African-American	Asian	Caucasian	Hispanic	Other	Total
Educational Administrators	17.17%	11.11%	45.45%	25.25%	1.01%	100.00%
Full-Time Faculty	14.00%	11.44%	56.59%	16.99%	1.00%	100.00%
Adjunct Faculty	13.28%	12.33%	59.53%	14.35%	0.50%	100.00%
Classified Administrators	5.88%	20.59%	58.82%	14.71%	0.00%	100.00%
Classified Professionals	18.95%	34.21%	30.52%	14.74%	1.58%	100.00%
Classified Support	23.09%	15.44%	27.82%	32.93%	0.72%	100.00%
Total	16.33%	13.73%	49.05%	20.19%	0.70%	100.00%
Statewide	African-American	Asian	Caucasian	Hispanic	Other	Total
Educational Administrators	10.60%	8.08%	63.99%	15.85%	1.47%	100.00%
Full-Time Faculty	6.50%	9.38%	69.01%	13.56%	1.54%	100.00%
Adjunct Faculty	5.28%	9.69%	72.27%	11.65%	1.10%	100.00%
Classified Administrators	6.45%	8.50%	69.45%	14.46%	1.13%	100.00%
Classified Professionals	8.78%	17.41%	54.24%	18.29%	1.28%	100.00%
Classified Support	9.28%	13.34%	48.55%	27.22%	1.61%	100.00%
Total	6.86%	10.76%	64.41%	16.63%	1.34%	100.00%

**Los Angeles Community College District
Internal Scan for LACCD Strategic Plan, 2012-2017**

Figure E10: Presidential Turnover

College	President	Term in Office	Length of Term in Office
City	1	... – 07/2005	...
	2	08/2005 – 08/2007	2 years, 1 month
	3	09/2007 – present	4 years, 2 months
East	1	... – 07/2006	...
	2	08/2006 – 06/2008	1 year, 11 months
	1	07/2008 – 08/2011	3 years, 2 months
	3	08/2011 – present	3 months
Harbor	1	... – 07/2010	...
	2	08/2010 – present	1 year, 3 months
Mission	1	... – 10/2005	...
	2	11/2005 – 07/2006	9 months
	3	08/2006 – 03/2008	1 year, 8 months
	4	04/2008 – 01/2011	2 years, 10 months
	5	02/2011 – 04/2011	3 months
	6	05/2011 – present	6 months
Pierce	1	... – 01/2006	...
	2	02/2006 – 07/2009	3 years, 6 months
	3	08/2009 – 07/2010	1 year
	4	08/2010 – 01/2011	6 months
	3	02/2011 – 04/2011	3 months
	4	05/2011 – present	6 months
Southwest	1	... – 07/2006	...
	2	07/2006 – present	5 years, 4 months
Trade-Tech	1	... – 08/2005	...
	2	08/2005 – 07/2006	1 year
	3	08/2006 – present	5 years, 3 months
Valley	1	... – 06/2008	...
	2	06/2008 – present	3 years, 5 months
West	1	... – 07/2005	...
	2	08/2005 – 06/2006	11 months
	3	07/2006 – 06/2010	4 years
	4	07/2010 – 08/2010	2 months
	5	09/2010 – 07/2011	11 months
	6	08/2011 – present	3 months

**Los Angeles Community College District
Internal Scan for LACCD Strategic Plan, 2012-2017**

F. Economic Impact

Figure F1: Key Findings from Recent (2008) LACCD Economic Impact Study

Students enjoy an attractive **24% annual return on their investment of time and money.** For every \$1 students invest in the Los Angeles Community College District (“the LACCD” or “the District”), they receive a cumulative **\$7.60 in higher future income over the** course of their working careers.

Taxpayers see a real money return of **10% on their annual investments in the District.**

The State of California benefits from improved health and reduced welfare, unemployment, and crime, saving the public some **\$38.5 million per year each year** that students are in the workforce.

The Los Angeles County economy receives roughly **\$9.1 billion in regional income** each year due to the LACCD and its past and present students. This figure amounts to roughly 1.8% of the area’s total annual income.